

Product datasheet for **TA301476**

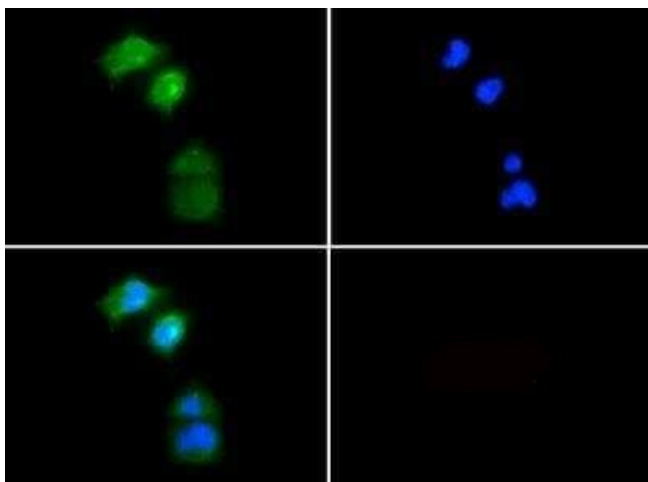
PGP9.5 (UCHL1) Rabbit Polyclonal Antibody

Product data:

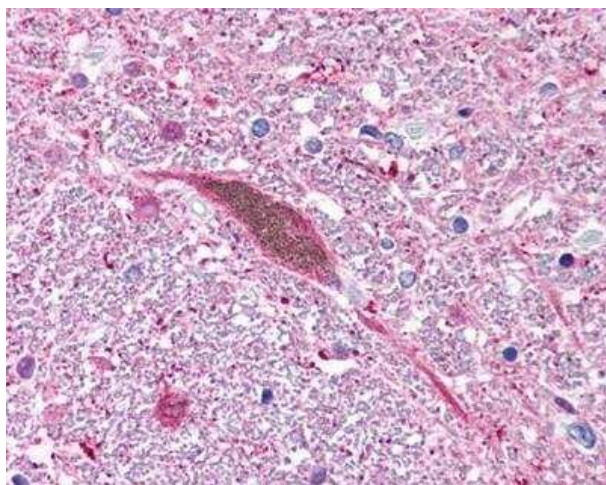
Product Type:	Primary Antibodies
Applications:	ICC/IF, IHC, WB
Recommended Dilution:	Immunohistochemistry: 2.5-5.0 ug/ml, Immunocytochemistry/ Immunofluorescence: 1:100-1:200, Western Blot: 0.5-2.0 ug/ml, Immunohistochemistry-Paraffin: 2.5-5.0 ug/ml
Reactivity:	Human, Mouse
Host:	Rabbit
Isotype:	IgG
Clonality:	Polyclonal
Immunogen:	A synthetic peptide made to an internal portion of the human UCHL1 protein sequence (between residues 100-200). UniProt P09936
Formulation:	Tris-glycine and 150mM NaCl and 0.05% Sodium azide
Concentration:	lot specific
Conjugation:	Unconjugated
Storage:	Store at -20°C as received.
Stability:	Stable for 12 months from date of receipt.
Gene Name:	ubiquitin C-terminal hydrolase L1
Database Link:	NP_004172 Entrez Gene 22223 Mouse Entrez Gene 7345 Human P09936
Background:	UCHL1 is a soluble cytoplasmic protein with a molecular weight of approximately 25,000 kD. It is present in neurons and in cells of the diffuse neuroendocrine system. UCHL1 functions as a tissue-specific ubiquitin carboxyl terminal hydrolase isoenzyme. This enzyme is also known as PGP9.5. Because of its abundance in nerves, it has been widely used as a marker for peripheral nerve fibers.
Synonyms:	HEL-117; NDGOA; PARK5; PGP 9.5; PGP9.5; PGP95; Uch-L1
Protein Families:	Druggable Genome, Protease
Protein Pathways:	Parkinson's disease



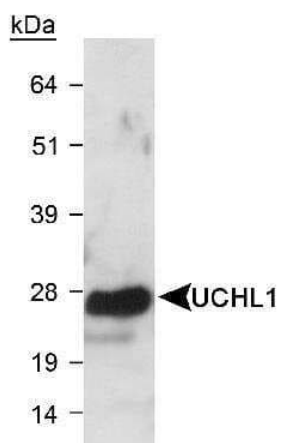
[View online »](#)

Product images:

Immunocytochemistry/Immunofluorescence:
UCH-L1/PGP9.5 Antibody TA301476 - In Neuro2a
cells with FITC (green). Nuclei were
counterstained with DAPI (blue).



Immunohistochemistry: PGP9.5 / UCHL-1
Antibody TA301476 - Human brain, Substantia
Nigra, Pigmented Neuron, 40X.



Western Blot: PGP9.5 / UCHL-1 Antibody
TA301476 - Detection of UCHL1 in mouse brain
lysate.