

Product datasheet for **TA301471**

Beclin 1 (BECN1) Rabbit Polyclonal Antibody

Product data:

Product Type:	Primary Antibodies
Applications:	ICC/IF, WB
Recommended Dilution:	Immunocytochemistry/ Immunofluorescence, Western Blot: 1:500
Reactivity:	Human, Mouse
Host:	Rabbit
Isotype:	IgG
Clonality:	Polyclonal
Immunogen:	NB 500-266 was raised against full length human beclin 1 protein.
Formulation:	0.1% sodium azide
Purification:	Whole antisera
Conjugation:	Unconjugated
Storage:	Store at -20°C as received.
Stability:	Stable for 12 months from date of receipt.
Gene Name:	beclin 1
Database Link:	NP_003757 Entrez Gene 56208 Mouse Entrez Gene 8678 Human Q14457



[View online »](#)

Background:

Beclin 1 is the first identified mammalian gene to mediate autophagy and also has tumor suppressor and antiviral function. Autophagy, a process of bulk protein degradation through an autophagosomic-lysosomal pathway, is important for differentiation, survival during nutrient deprivation, and normal growth control, and is often defective in tumor cells. Beclin 1 was originally isolated in a yeast two hybrid screen to identify Bcl-2-binding partners and maps to a tumor susceptibility locus on human chromosome 17q21 that is frequently monoallelically deleted in human breast, ovarian and prostate cancer. Beclin 1 encodes an evolutionarily conserved 60 kDa coiled coil protein that is expressed in human muscle, epithelial cells and neurons. In gene transfer studies, beclin 1 promotes nutrient deprivation-induced autophagy, inhibits mammary tumorigenesis, and inhibits viral replication. Expression of the Beclin 1 protein is frequently decreased in malignant breast epithelial cells. Based upon these observations, it is speculated that beclin 1 may work through induction of autophagy to negatively regulate tumorigenesis and to control viral infections. Beclin 1 may also play a role in other biologic processes in which autophagy is important such as cell differentiation and nutritional stress responses.

Synonyms:

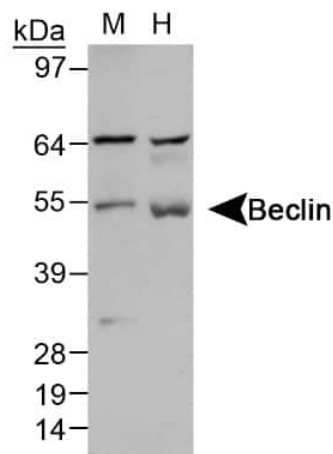
ATG6; beclin1; VPS30

Protein Families:

Druggable Genome

Protein Pathways:

Regulation of autophagy

Product images:


Western Blot: Beclin 1 Antibody TA301471 - Detection of Beclin 1 in liver lysates using TA301471. (1) mouse liver and (2) human liver.