

Product datasheet for **TA301468**

Thimet Oligopeptidase (THOP1) Mouse Monoclonal Antibody [Clone ID: 4D6]

Product data:

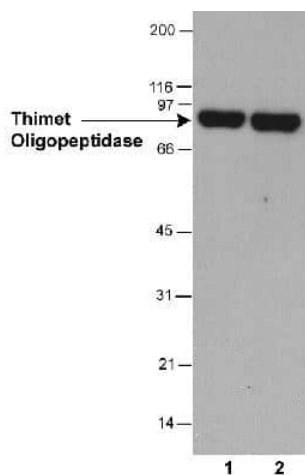
Product Type:	Primary Antibodies
Clone Name:	4D6
Applications:	ICC/IF, IHC, WB
Recommended Dilution:	Immunohistochemistry: 1:400, Immunocytochemistry/ Immunofluorescence: 1:10-1:500, Western Blot: 1:750-1:3000, Immunohistochemistry-Paraffin: 1:400
Reactivity:	Human
Host:	Mouse
Isotype:	IgG2b
Clonality:	Monoclonal
Immunogen:	A synthetic peptide corresponding to residues 56-72 of human thimet oligopeptidase.
Formulation:	Tris-glycine and 150mM NaCl and 0.05% sodium azide
Concentration:	lot specific
Conjugation:	Unconjugated
Storage:	Store at -20°C as received.
Stability:	Stable for 12 months from date of receipt.
Gene Name:	thimet oligopeptidase 1
Database Link:	NP_003240 Entrez Gene 7064 Human P52888
Background:	A steady-state level of amyloid beta-peptide (Abeta) represents a balance between its biosynthesis from the amyloid precursor protein (APP) through the action of the beta and gamma-secretases and its catabolism by a variety of proteolytic enzymes. Thimet Oligopeptidase (THOP1) has been shown to promote A-beta degradation. It has also been shown to play a role in antigen presentation, metabolism of neuropeptides under 20 amino acids, and cytoplasmic peptide degradation.
Synonyms:	EP24.15; MEPD_HUMAN; MP78; TOP
Protein Families:	Druggable Genome, Protease



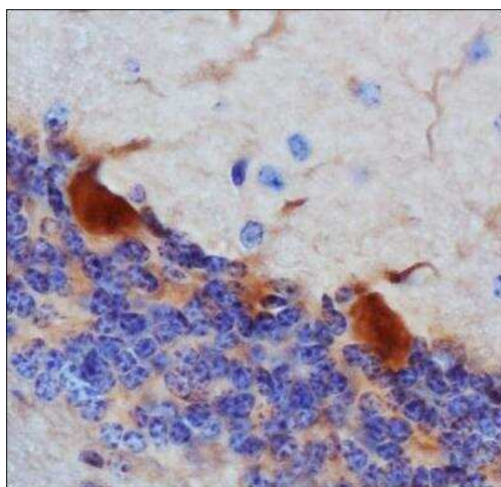
[View online »](#)

Protein Pathways: Renin-angiotensin system

Product images:



Western Blot: Thimet Oligopeptidase Antibody (4D6) TA301468 - Detection of thimet oligopeptidase antibody in HeLa whole cell lysate (30 ug) using TA301468. Lane 1: 0.5 ug/ml; lane 2: 2 ug/ml. 1 minute ECL exposure.



Immunohistochemistry: Thimet Oligopeptidase Antibody (4D6) TA301468 - Analysis of Thimet Oligopeptidase in mouse brain using DAB with hematoxylin counterstain.