

Product datasheet for **TA301467**

Cripto1 (TDGF1) Rabbit Polyclonal Antibody

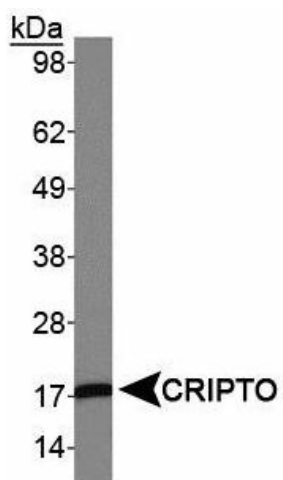
Product data:

Product Type:	Primary Antibodies
Applications:	FC, IF, WB
Recommended Dilution:	WB: 1:500-1:2000
Reactivity:	Human
Host:	Rabbit
Isotype:	IgG
Clonality:	Polyclonal
Immunogen:	A synthetic peptide made to an internal portion of the human crypto protein sequence (between residues 100-150).
Formulation:	Tris-glycine and 150mM NaCl and 0.05% sodium azide
Concentration:	lot specific
Purification:	Whole antisera
Conjugation:	Unconjugated
Storage:	Store at -20°C as received.
Stability:	Stable for 12 months from date of receipt.
Gene Name:	teratocarcinoma-derived growth factor 1
Database Link:	NP_003203 Entrez Gene 6997 Human P13385
Background:	The crypto gene is expressed both in ES cells and during the early phases of embryo development, while, in the adult, it is reactivated in a wide range of epithelial cancers.
Synonyms:	CR; CRGF; CRIPTO
Protein Families:	Druggable Genome, Embryonic stem cells, ES Cell Differentiation/IPS, Stem cell - Pluripotency, Transmembrane

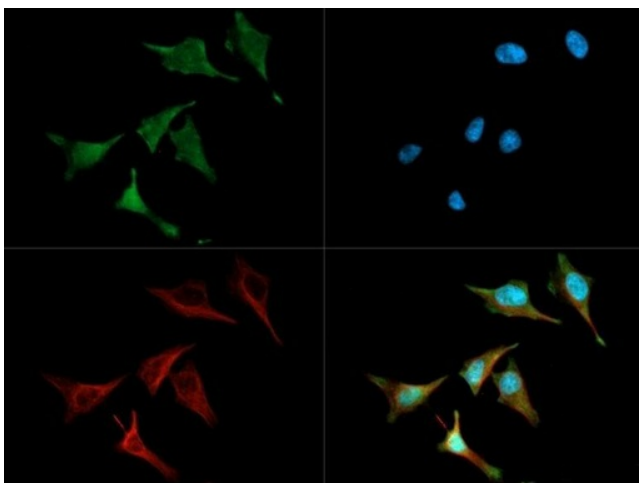


[View online »](#)

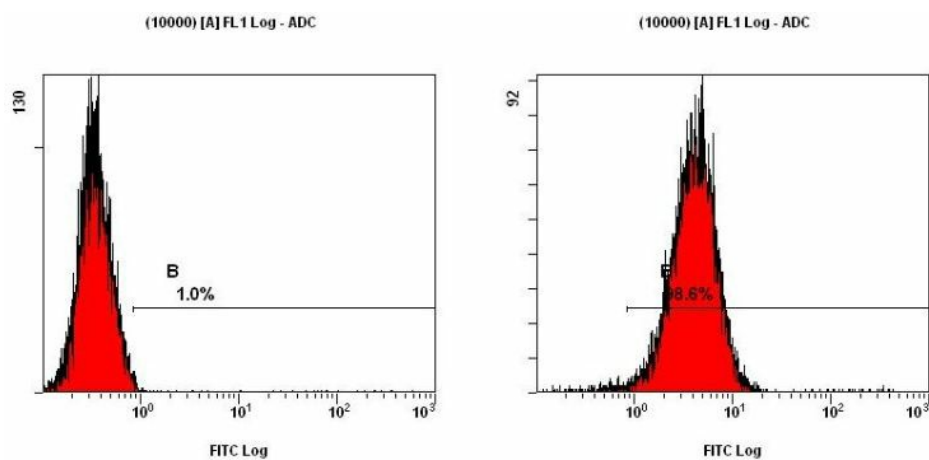
Product images:



Western Blot: Cripto1 Antibody - Analysis of Cripto in MDA-MB231 lysates.



Immunocytochemistry/Immunofluorescence: Cripto1 antibody was tested in HeLa cells with Dylight 488 (green). Nuclei were counterstained with DAPI (blue) and tubulin was stained with alpha tubulin (red).



Flow Cytometry: Staining of NTERA-2 cells using Cripto1 Antibody at a 1:50 dilution detected using Dylight-488 conjugated goat anti-rabbit IgG secondary.