

## Product datasheet for **TA301466**

### Stromal interaction molecule 1 (STIM1) Rabbit Polyclonal Antibody

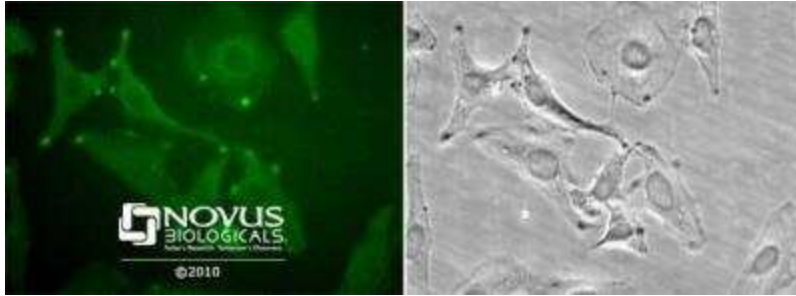
#### Product data:

Product Type:	Primary Antibodies
Applications:	ICC/IF, WB
Recommended Dilution:	Immunocytochemistry/ Immunofluorescence: 1:50-1:200, Western Blot: 1:1000, Knockdown Validated: 1:1000
Reactivity:	Human, Mouse, Rat, Bovine, Dog
Host:	Rabbit
Isotype:	IgG
Clonality:	Polyclonal
Immunogen:	A synthetic peptide made to a C-terminal region (within residues 600-685) of the human protein. [Uniprot# Q13586]
Formulation:	PBS + 30% glycerol and 0.1% sodium azide
Concentration:	lot specific
Purification:	peptide affinity purified
Conjugation:	Unconjugated
Storage:	Store at -20°C as received.
Stability:	Stable for 12 months from date of receipt.
Gene Name:	stromal interaction molecule 1
Database Link:	<a href="#">NP_003147</a> <a href="#">Entrez Gene 20866 MouseEntrez Gene 361618 RatEntrez Gene 608643 DogEntrez Gene 6786 Human Q13586</a>
Background:	Stromal interaction molecule 1 plays a role in mediating Ca(2+) influx following depletion of intracellular Ca(2+) stores. It acts as Ca(2+) sensor in the endoplasmic reticulum via its EF-hand domain. Upon Ca(2+) depletion, it translocates from the endoplasmic reticulum to the plasma membrane where it activates the Ca(2+) release-activated Ca(2+) (CRAC) channel subunit.
Synonyms:	D11S4896E; GOK; IMD10; STRMK; TAM; TAM1
Protein Families:	Transmembrane

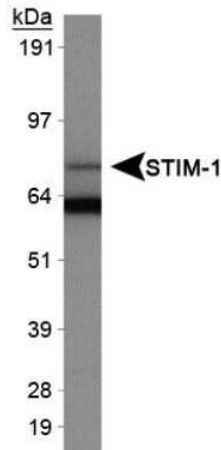


[View online »](#)

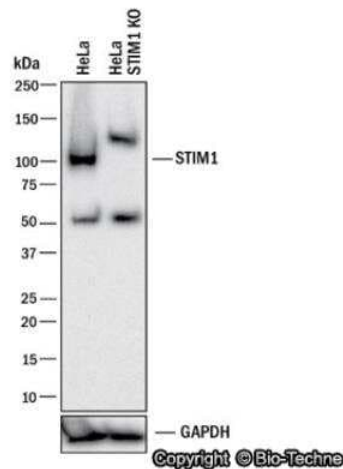
Product images:



Immunocytochemistry/Immunofluorescence: STIM1 Antibody TA301466 - Staining in HeLa cells detected with a Dylight 488 labeled secondary antibody.



Western Blot: STIM1 Antibody TA301466 - Stromal interaction molecule 1 Antibody TA301466 - Detection of STIM1 in HeLa whole cell extracts.



Knockdown Validated: STIM1 Antibody TA301466 - Western blot shows lysates of HeLa human cervical epithelial carcinoma parental cell line and Stim-1 knockout (KO) HeLa cell line. PVDF membrane was probed with 1:1000 of Rabbit Anti-Human Stim-1 Polyclonal Antibody (Catalog # TA301466) followed by HRP-conjugated Anti-Rabbit IgG Secondary Antibody (Catalog #HAF008). Specific band was detected for Stim-1 at approximately 90 kDa (as indicated) in the parental HeLa cell line, but is not detectable in the knockout HeLa cell line. This experiment was conducted under reducing conditions.