

Product datasheet for **TA301460**

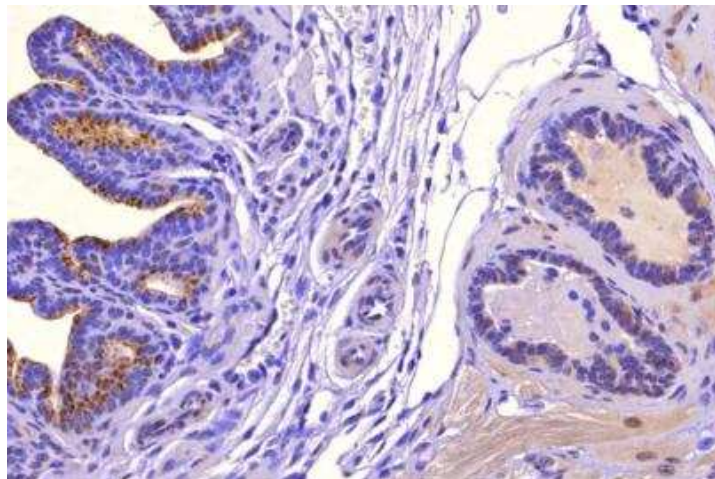
SAT1 Rabbit Polyclonal Antibody

Product data:

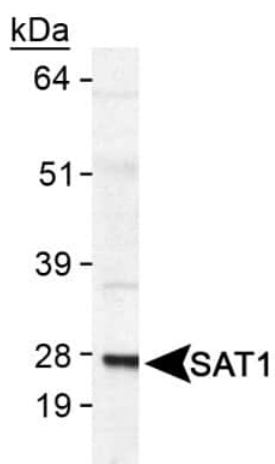
Product Type:	Primary Antibodies
Applications:	IHC, WB
Recommended Dilution:	Immunohistochemistry-Paraffin: 1:100, Immunohistochemistry: 1:100, Western Blot: 1:500-1:1000
Reactivity:	Human, Mouse, Porcine, Xenopus, Hamster, Cow, Rat, Chicken
Host:	Rabbit
Isotype:	IgG
Clonality:	Polyclonal
Immunogen:	A synthetic peptide made to a C-terminal region within residues 100-171 of the human protein. [Swiss-Prot# P21673]
Formulation:	Tris-glycine, 150mM NaCl and 0.05% sodium azide
Purification:	peptide affinity purified
Conjugation:	Unconjugated
Storage:	Store at -20°C as received.
Stability:	Stable for 12 months from date of receipt.
Gene Name:	spermidine/spermine N1-acetyltransferase 1
Database Link:	NP_002961 Entrez Gene 20229 Mouse Entrez Gene 302642 Rat Entrez Gene 6303 Human P21673
Background:	Spermidine/spermine-N1-acetyltransferase (SSAT1) is a short-lived polyamine catabolic enzyme which catalyzes the acetylation of polyamines. This highly regulated enzyme allows a fine attenuation of the intracellular concentration of polyamines. Induction of SSAT1 plays an important role in polyamine homeostasis, since the N1-acetylated polyamines can be excreted or oxidized by acetyl polyamine oxidase.
Synonyms:	DC21; KFSD; KFSDX; SAT; SSAT; SSAT-1
Protein Families:	Druggable Genome
Protein Pathways:	Arginine and proline metabolism, Metabolic pathways



[View online »](#)

Product images:

Immunohistochemistry: SAT1 Antibody TA301460 - IHC analysis of SAT1 in mouse seminal vesical (left) and prostate (right) using DAB with hematoxylin counterstain,



Western Blot: SAT1 Antibody TA301460 - Detection of SAT1 in human SAT1 transfected lysate.