

Product datasheet for **TA301458**

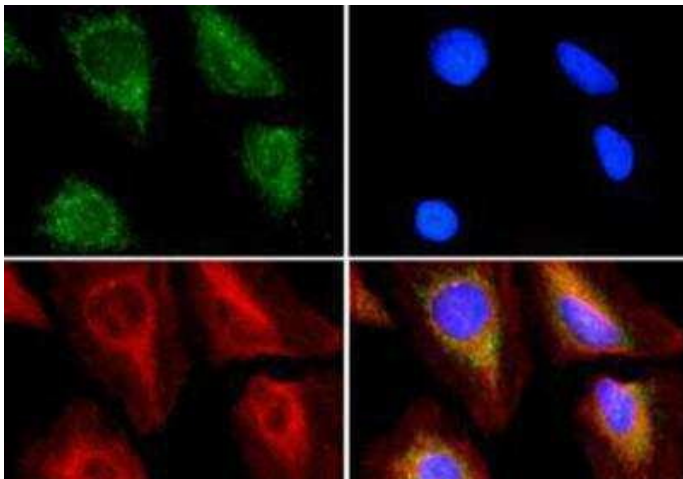
ABCE1 Rabbit Polyclonal Antibody

Product data:

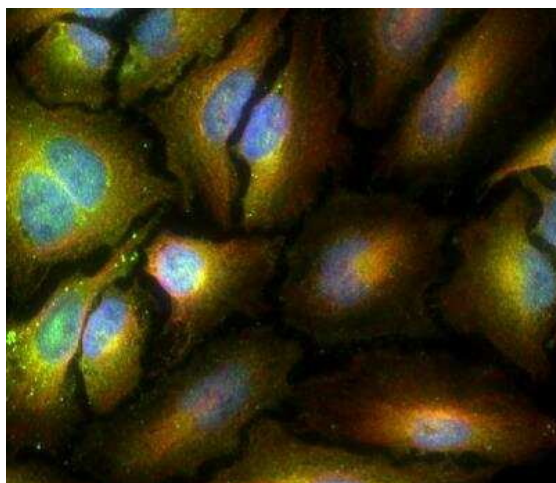
Product Type:	Primary Antibodies
Applications:	ICC/IF, IP, WB
Recommended Dilution:	Immunocytochemistry/ Immunofluorescence: 2-5 ug/ml, Western Blot: 1:250-1:1000, Immunoprecipitation: 1:1000
Reactivity:	Human
Host:	Rabbit
Isotype:	IgG
Clonality:	Polyclonal
Immunogen:	A fusion protein containing amino acids 1-119 of the ABCE1 protein.
Formulation:	PBS with 0.05% Sodium Azide
Concentration:	lot specific
Purification:	Immunogen affinity purified
Conjugation:	Unconjugated
Storage:	Store at -20°C as received.
Stability:	Stable for 12 months from date of receipt.
Gene Name:	ATP binding cassette subfamily E member 1
Database Link:	NP_002931 Entrez Gene 6059 Human P61221
Background:	ABCE1 is a member of the ABC Transporter superfamily, although it is not a membrane transporter. It is cytosolically expressed and inhibits the RNaseL protein. Recently, it has been found to be essential for the assembly of immature immunodeficiency virus capsids.
Synonyms:	ABC38; OABP; RLI; RNASEL1; RNASELI; RNS4I
Protein Families:	Druggable Genome



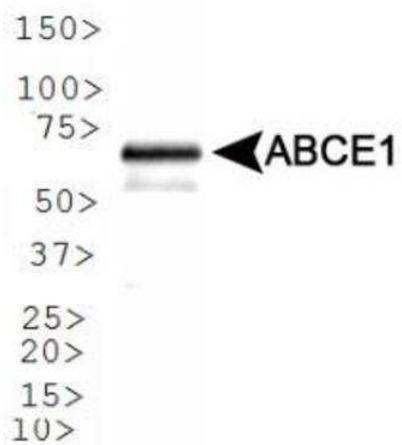
[View online »](#)

Product images:

Immunocytochemistry/Immunofluorescence:
ABCE1 Antibody TA301458 - ABCE1 antibody was tested in HeLa cells with Dylight 488 (green). Nuclei and alpha-tubulin were counterstained with DAPI (blue) and Dylight 550 (red).



Immunocytochemistry/Immunofluorescence:
ABCE1 Antibody TA301458 - HeLa cells were fixed for 10 minutes using 10% formalin and then permeabilized for 5 minutes using 1X PBS + 0.05% Triton-X100. The cells were incubated with anti-ABCE1 at 2 ug/ml overnight at 4C and detected with an anti-rabbit Dylight 488 (Green) at a 1:500 dilution. Alpha tubulin (DM1A) NB100-690 was used as a co-stain at a 1:1000 dilution and detected with an anti-mouse Dylight 550 (Red) at a 1:500 dilution. Nuclei were counterstained with DAPI (Blue). Cells were imaged using a 40X objective.



Western Blot: ABCE1 Antibody TA301458 - WB analysis of ABCE1 in A431 lysate.