

Product datasheet for **TA301455**

PDK1 Rabbit Polyclonal Antibody

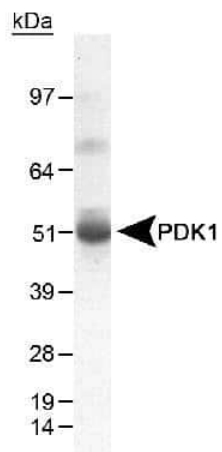
Product data:

Product Type:	Primary Antibodies
Applications:	Immunoblotting, WB
Recommended Dilution:	Immunoblotting, Western Blot: 0.5-2 ug/ml
Reactivity:	Human
Host:	Rabbit
Isotype:	IgG
Clonality:	Polyclonal
Immunogen:	A synthetic peptide made to an internal portion of the human PDK1 protein sequence (between residues 300-400). [Swiss-Prot Q15118]
Formulation:	Tris-glycine, 150mM NaCl and 0.05% sodium azide
Concentration:	lot specific
Purification:	Affinity purified
Conjugation:	Unconjugated
Storage:	Store at -20°C as received.
Stability:	Stable for 12 months from date of receipt.
Gene Name:	pyruvate dehydrogenase kinase 1
Database Link:	NP_002601 Entrez Gene 5163 Human Q15118
Background:	Pyruvate dehydrogenase kinase isoform 1 (PDK1) inhibits the mitochondrial pyruvate dehydrogenase complex by phosphorylation of the E1 alpha subunit, thus contributing to the regulation of glucose metabolism.
Synonyms:	isoenzyme 1; isozyme 1; mitochondrial pyruvate dehydrogenase kinase isoenzyme 1; pyruvate dehydrogenase kinase
Protein Families:	Druggable Genome, Protein Kinase
Protein Pathways:	Fc epsilon RI signaling pathway, Neurotrophin signaling pathway, T cell receptor signaling pathway



[View online »](#)

Product images:



Western Blot: PDK-1 Antibody TA301455 -
Detection of PDK-1 in human heart lysate using
NB 100-2384 at 0.5 ug/ml.