

Product datasheet for **TA301449**

LOX Rabbit Polyclonal Antibody

Product data:

Product Type:	Primary Antibodies
Applications:	ICC/IF, IHC, Simple Western, WB
Recommended Dilution:	Knockdown Validated, Immunohistochemistry: 1:100-1:250, Immunocytochemistry/Immunofluorescence: 1:100, Western Blot: 0.5-4ug/ml, Immunohistochemistry-Paraffin: 1:100-1:250, Simple Western: 1:25
Reactivity:	Human, Mouse
Host:	Rabbit
Isotype:	IgG
Clonality:	Polyclonal
Immunogen:	A synthetic peptide made to an internal region of the human LOX protein (within residues 200-300). [Swiss-Prot P28300]
Formulation:	Tris-glycine, 150mM NaCl and 0.05% sodium azide
Concentration:	lot specific
Purification:	Affinity purified
Conjugation:	Unconjugated
Storage:	Store at -20°C as received.
Stability:	Stable for 12 months from date of receipt.
Gene Name:	lysyl oxidase
Database Link:	NP_002308 Entrez Gene 16948 Mouse Entrez Gene 4015 Human P28300

Background: Lysyl oxidase (LOX), a copper-containing amine oxidase, belongs to a heterogeneous family of enzymes that oxidize primary amine substrates to reactive aldehydes. It plays a vital role in the formation and repair of the extra cellular matrix. As well, LOX is a multifunctional enzyme having diverse biological functions such as developmental regulation, tumor suppression, cell motility and cellular senescence. The secreted form of LOX is responsible for the invasive properties of hypoxic human cancer cells. Thus, it is essential for hypoxia-induced metastasis and is a good therapeutic target for preventing and treating metastases.

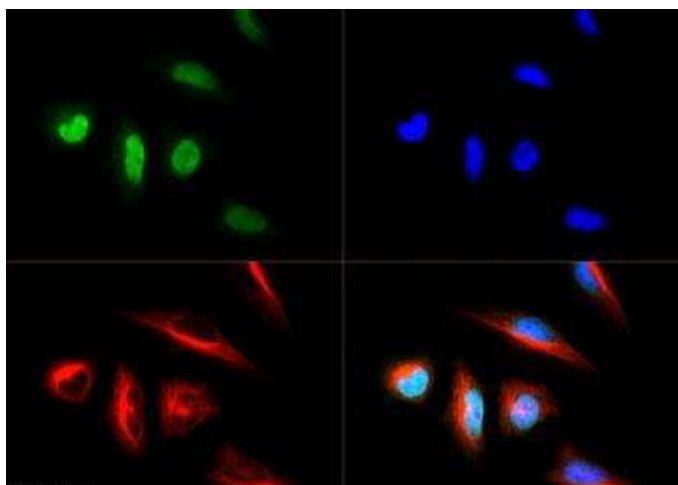


[View online »](#)

Synonyms: MGC105112

Protein Families: Druggable Genome, Secreted Protein

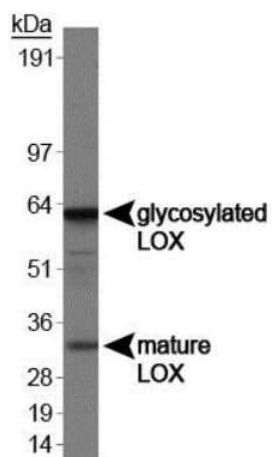
Product images:



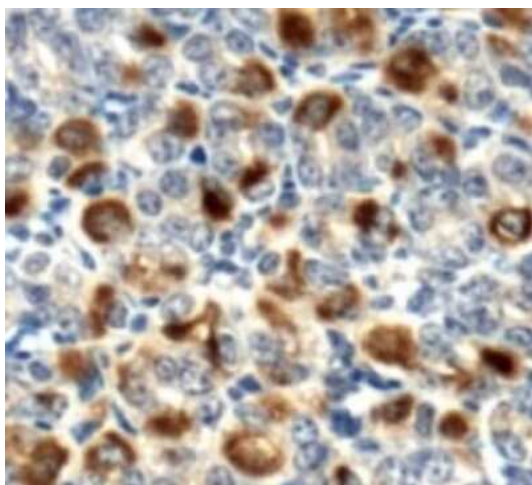
Immunocytochemistry/Immunofluorescence: LOX Antibody TA301449 - LOX antibody was tested in HeLa cells with Dylight 488 (green). Nuclei and alpha-tubulin were counterstained with DAPI (blue) and Dylight 550 (red).



Simple Western: LOX Antibody TA301449 - Simple Western shows a specific band for LOX in 1.0 mg/ml of HeLa cell lysate. This experiment was performed under reducing conditions using the 12-230 kDa separation system.



Western Blot: LOX Antibody TA301449 - Analysis of LOX in human kidney using TA301449.



Immunohistochemistry: LOX Antibody TA301449 - Staining of LOX in mouse stomach.