

## Product datasheet for **TA301447**

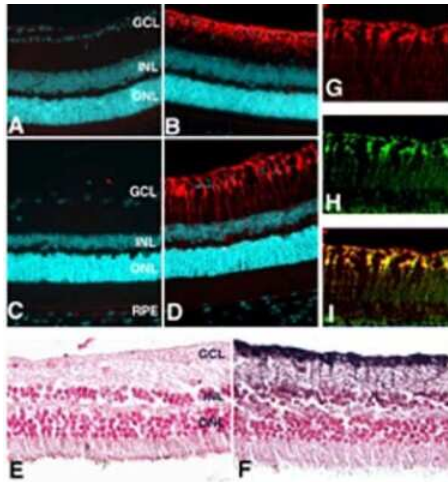
### Glutamine Synthetase (GLUL) Rabbit Polyclonal Antibody

#### Product data:

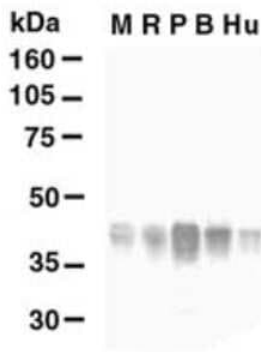
Product Type:	Primary Antibodies
Applications:	ICC/IF, IHC, WB
Recommended Dilution:	Immunocytochemistry/ Immunofluorescence: 1:500 - 1:1000, Immunohistochemistry: 1:1000, Western Blot: 1:1000
Reactivity:	Bovine, Human, Mouse, Rat
Host:	Rabbit
Isotype:	IgG
Clonality:	Polyclonal
Immunogen:	Recombinant protein.
Formulation:	0.05% sodium azide
Purification:	Whole antisera
Conjugation:	Unconjugated
Storage:	Store at -20°C as received.
Stability:	Stable for 12 months from date of receipt.
Gene Name:	glutamate-ammonia ligase
Database Link:	<a href="#">NP_002056</a> <a href="#">Entrez Gene 14645 Mouse</a> <a href="#">Entrez Gene 24957 Rat</a> <a href="#">Entrez Gene 2752 Human</a> <a href="#">P15104</a>
Background:	Glutamine synthase is part of the glutamine synthetase family. Ammonia incorporation in animals occurs through the actions of glutamate dehydrogenase and glutamine synthase. Glutamate plays the central role in mammalian nitrogen flow, serving as both a nitrogen donor and nitrogen acceptor.
Synonyms:	GLNS; GS; PIG43; PIG59
Protein Pathways:	Alanine, aspartate and glutamate metabolism, Arginine and proline metabolism, Metabolic pathways, Nitrogen metabolism



[View online »](#)

**Product images:**


Immunohistochemistry: Glutamine Synthetase Antibody TA301447 - Localization of glutamine synthase in the retina. Paraffin sections of mouse (A, B), rat (C, D, G-I), or human (E, F) retina fixed in 4% paraformaldehyde were reacted with anti-glutamine synthase (red fluorescence staining in B, D, G, I, and brown immuno-peroxidase reaction. Nuclei in IF experiments (A-D) were stained with DAPI (cyan), and with nuclear fast red in E and F. At low magnification, anti-glutamine synthase reacted with a single population of cells extending from the ganglion cell layer through the inner nuclear layer. No signal was detected in controls either pre-incubated with 100ug/ml of the immunizing peptide (A) or with pre-immune serum (C, E). This finding was confirmed by co-localization (indicated by yellow in I) of glutamine synthase (red in G) with another marker of glutamine synthase (green in H).



Western Blot: Glutamine Synthetase Antibody TA301447 - Analysis of glutamine synthase. 40ug of lysates from mouse (Lanes M), rat (Lane R), pig (Lane P), bovine (Lane B), or human (Lane Hu) retina were probed. A 42 kDa band was identified in lysates from retinas of all species.