

Product datasheet for **TA301439**

HSP27 (HSPB1) Rabbit Polyclonal Antibody

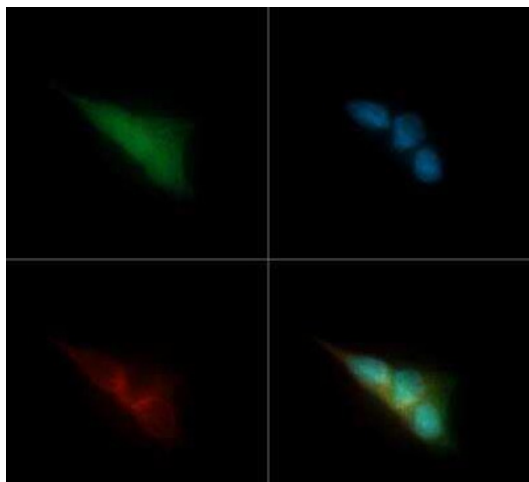
Product data:

Product Type:	Primary Antibodies
Applications:	ICC/IF, WB
Recommended Dilution:	Western Blot: 0.5-1.0 ug/ml, Immunocytochemistry/ Immunofluorescence: 1:50 - 1:150
Reactivity:	Human, Mouse
Host:	Rabbit
Isotype:	IgG
Clonality:	Polyclonal
Immunogen:	A synthetic peptide made to an internal region of the human Crystallin AB protein (within residues 100-175). [Swiss-Prot P02511]
Formulation:	Tris-citrate/phosphate (pH 7-8) and 0.1% sodium azide
Concentration:	lot specific
Purification:	Affinity purified
Conjugation:	Unconjugated
Storage:	Store at -20°C as received.
Stability:	Stable for 12 months from date of receipt.
Gene Name:	heat shock protein family B (small) member 1
Database Link:	NP_001531 Entrez Gene 15507 Mouse Entrez Gene 3315 Human P04792
Background:	Crystallin AB (CryAB) is a developmentally regulated small heat shock protein known to protect cells from stress damage. It may also play an important role in the Golgi reorganization during cell division. CryAB is known to be associated with a number of neurodegenerative pathologies such as Alzheimer disease and multiple sclerosis. As well, it has been found to be expressed in breast tumors of patients with shorter survival, suggesting that it may be a useful marker in identifying aggressive breast cancer.
Synonyms:	CMT2F; HEL-S-102; HMN2B; HS.76067; Hsp25; HSP27; HSP28; SRP27
Protein Pathways:	MAPK signaling pathway, VEGF signaling pathway

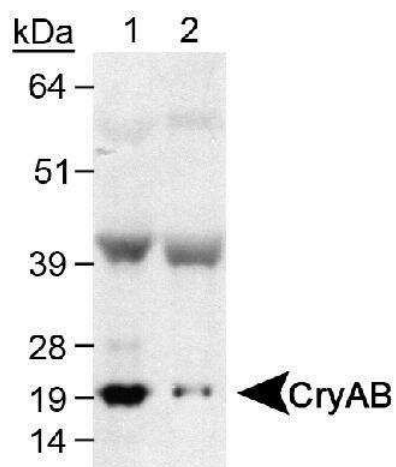


[View online »](#)

Product images:



Immunocytochemistry/Immunofluorescence: AlphaB Crystallin/CRYAB Antibody TA301439 - CRYAB antibody was tested in SH5H5Y cells with DyLight488 (green). Nuclei and alpha-tubulin were counterstained with DAPI (blue) and Dylight 550 (red).



Western Blot: AlphaB Crystallin/CRYAB Antibody TA301439 - Detection of CryAB using NB 100-2519 (0.5ug/ml). Lane 1: Human skeletal muscle Lane 2: Mouse skeletal muscle.