

## Product datasheet for **TA301435**

### HIF 2 alpha (EPAS1) Mouse Monoclonal Antibody [Clone ID: EP190B]

#### Product data:

Product Type:	Primary Antibodies
Clone Name:	EP190B
Applications:	ChIP, ELISA, FC, ICC/IF, IHC, IP, Simple Western, WB
Recommended Dilution:	Chromatin Immunoprecipitation (ChIP), Gel Supershift Assay, Gel Super Shift Assays, Immunohistochemistry-Frozen, In vivo assay, Knockdown Validated, Western Blot: 1 - 2 ug/mL, Immunohistochemistry: 1:150 - 1:300, Immunohistochemistry-Paraffin: 1:150 - 1:300, Simple Western: 1:100, Flow Cytometry: 1:400, ELISA: 1:100-1:2000, Immunocytochemistry/ Immunofluorescence, Immunoprecipitation
Reactivity:	Human, Rat
Host:	Mouse
Isotype:	IgG1
Clonality:	Monoclonal
Immunogen:	Human HIF-2 alpha amino acids 535-631.
Formulation:	PBS and 0.1% sodium azide
Purification:	protein G purified
Conjugation:	Unconjugated
Storage:	Store at -20°C as received.
Stability:	Stable for 12 months from date of receipt.
Gene Name:	endothelial PAS domain protein 1
Database Link:	<a href="#">NP_001421</a> <a href="#">Entrez Gene 29452 Rat</a> <a href="#">Entrez Gene 2034 Human</a> <a href="#">Q99814</a>



[View online »](#)

**Background:**

Hypoxia contributes significantly to the pathophysiology of major categories of human disease, including myocardial and cerebral ischemia, cancer, pulmonary hypertension, congenital heart disease and chronic obstructive pulmonary disease. HIF-2 alpha is predominantly expressed in highly vascularized tissues of adult humans and endothelial cells of the embryonic and adult mouse, whereas HIF-1 alpha functions primarily in extravascular tissues. HIF-2 alpha is also a potent activator of the tie-2 gene, which is known to be selectively expressed in endothelial cells.

**Synonyms:**

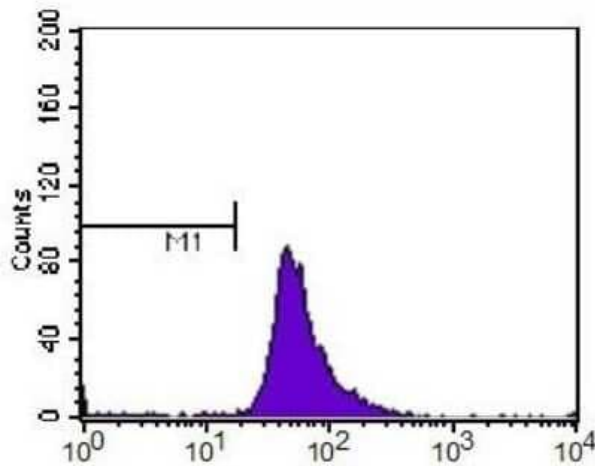
bHLHe73; ECTY4; HIF2A; HLF; MOP2; PASD2

**Protein Families:**

Druggable Genome, Transcription Factors

**Protein Pathways:**

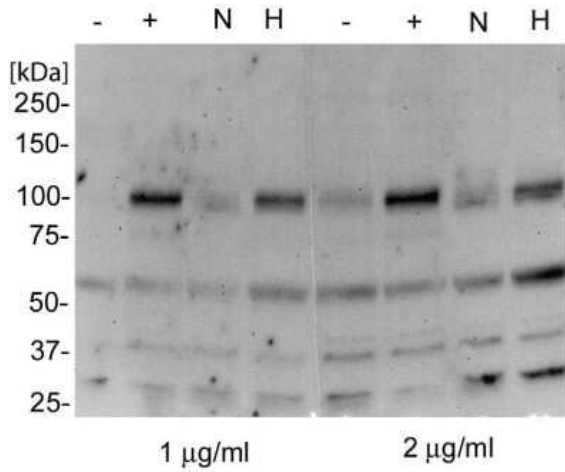
Pathways in cancer, Renal cell carcinoma

**Product images:**


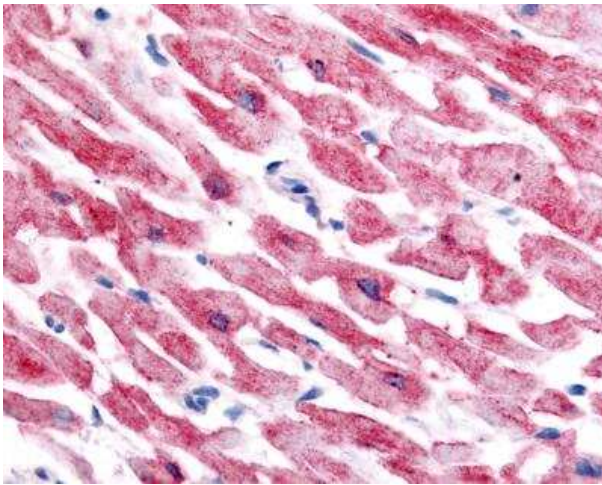
Flow Cytometry: HIF-2 alpha/EPAS1 Antibody (ep190b) TA301435 - HIF-2 alpha antibody was tested at 1:400 in HepG2 cells using an Alexa Fluor 488 secondary (shown in purple). M1 is defined by unstained cells.



Simple Western: HIF-2 alpha/EPAS1 Antibody (ep190b) TA301435 - Lane view shows a specific band for HIF-2 alpha in 0.5 mg/mL of Hypoxic HeLa lysate. This experiment was performed under reducing conditions using the 12-230 kDa separation system.



Western Blot: HIF-2 alpha/EPAS1 Antibody (ep190b) TA301435 - Analysis of HepG2 without Cobalt (II) Chloride (1), HepG2 with Cobalt (II) Chloride (2), HepG2 normoxic (3), HepG2 hypoxic (4), HepG2 without Cobalt (II) Chloride (5), HepG2 with Cobalt (II) Chloride (6), HepG2 normoxic (7), and HepG2 hypoxic (8) using this antibody (TA301435) at 1 - 2 µg/ml.



Immunohistochemistry-Paraffin: HIF-2 alpha/EPAS1 Antibody (ep190b) TA301435 - Analysis of HIF-2 in human cardiac myocytes using HIF-2 alpha/EPAS1 Antibody (ep190b).