

Product datasheet for **TA301429**

BIRC5 Rabbit Polyclonal Antibody

Product data:

Product Type:	Primary Antibodies
Applications:	ICC/IF, IHC, WB
Recommended Dilution:	Immunocytochemistry/ Immunofluorescence: 1:100, Immunohistochemistry: 1:10-1:500, Western Blot
Reactivity:	Human
Host:	Rabbit
Isotype:	IgG
Clonality:	Polyclonal
Immunogen:	A synthetic peptide surrounding the phosphorylated serine 20 of the human Survivin protein. [Swiss-Prot #O15392]
Formulation:	PBS, 30% Glycerol and 0.1% sodium azide
Concentration:	lot specific
Purification:	peptide affinity purified
Conjugation:	Unconjugated
Storage:	Store at -20°C as received.
Stability:	Stable for 12 months from date of receipt.
Gene Name:	baculoviral IAP repeat containing 5
Database Link:	NP_001159 Entrez Gene 332 Human O15392
Background:	Survivin is a structurally unique inhibitor of apoptosis (IAP) that has been linked to protection from apoptosis, control of cell division, and cellular adaptation to stress. In order for survivin to provide this cytoprotection an interaction with at least one other IAP, such as XIAP, is necessary. It has recently been shown that Survivin is phosphorylated at Ser20 by protein kinase A (PKA) in the cytosol but not in the mitochondria. This phosphorylation on Ser20 disrupts the binding of cytosolic survivin to XIAP and therefore diminishes survivin's cytoprotective properties.
Synonyms:	API4; EPR-1

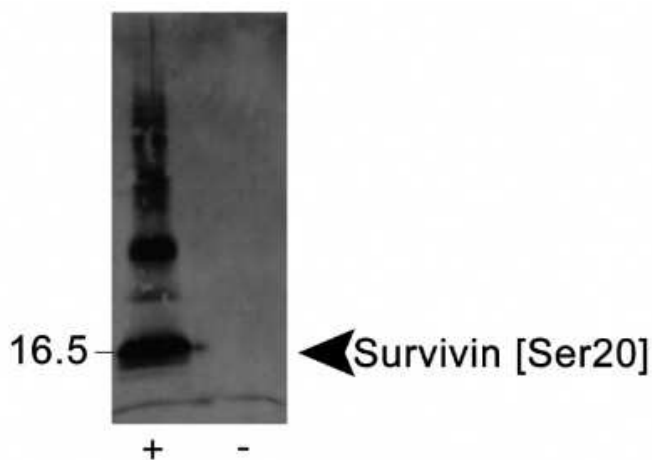


[View online »](#)

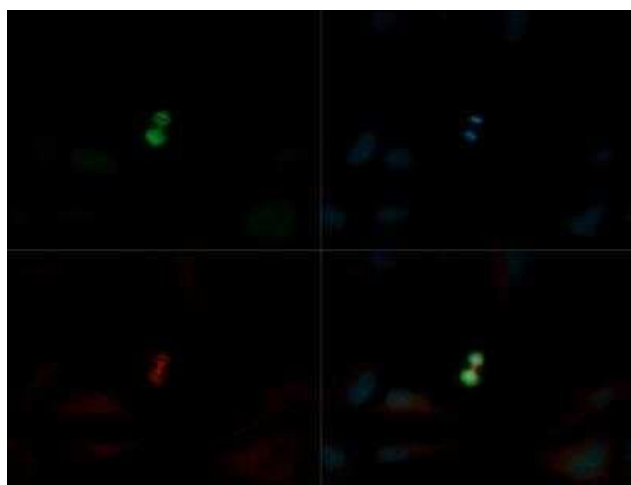
Protein Families: Druggable Genome, Stem cell - Pluripotency

Protein Pathways: Colorectal cancer, Pathways in cancer

Product images:



Western Blot: Survivin [p Ser20] Antibody TA301429 - Detection of Survivin [Ser20] in phosphorylated recombinant protein (+), but not in unphosphorylated protein (-) using TA301429. Band detected at slightly higher than the predicted molecular weight of 16 kDa.



Immunocytochemistry/Immunofluorescence: Survivin [p Ser20] Antibody TA301429 - Survivin [p Ser20] Antibody (TA301429) was tested in HeLa cells with DyLight 488 (green). Nuclei and alpha-tubulin were counterstained with DAPI (blue) and DyLight 550 (red).