

Product datasheet for **TA301423**

FE65 (APBB1) Rabbit Polyclonal Antibody

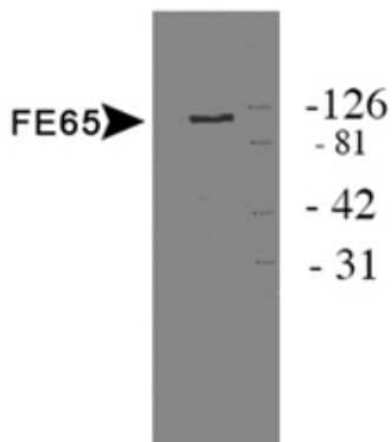
Product data:

Product Type:	Primary Antibodies
Applications:	IP, WB
Recommended Dilution:	Immunoprecipitation: 2-10 ug, Western Blot: 1:1000
Reactivity:	Human, Mouse, Rat
Host:	Rabbit
Isotype:	IgG
Clonality:	Polyclonal
Immunogen:	Recombinant rat protein expressed in bacteria.
Formulation:	PBS, 15% glycerol and 0.02% sodium azide
Purification:	Affinity purified
Conjugation:	Unconjugated
Storage:	Store at -20°C as received.
Stability:	Stable for 12 months from date of receipt.
Gene Name:	amyloid beta precursor protein binding family B member 1
Database Link:	NP_001155 Entrez Gene 11785 MouseEntrez Gene 29722 RatEntrez Gene 322 Human O00213
Background:	FE65 is a signaling adaptor of APP protein. The FE65/APP complex was shown to translocate into the cell nucleus and regulate gene expression. Genetic studies in mice validated FE65-APP interaction and molecular studies provided evidence on the role of the complex in abnormal signaling detected in brains of Alzheimer Disease patients.
Synonyms:	FE65; MGC:9072; RIR
Protein Families:	Transcription Factors
Protein Pathways:	Alzheimer's disease

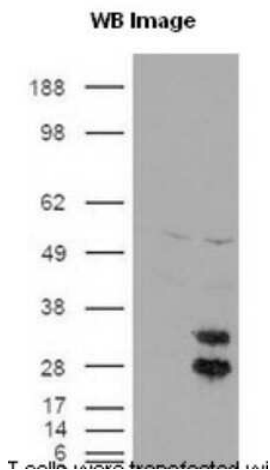


[View online »](#)

Product images:



Western Blot: FE65 Antibody TA301423 - Protein on HEK 293 cell lysate.



Western Blot: FE65 Antibody TA301423 - Cells were transfected with the pCMV6-ENTRY control or pCMV6-ENTRY APBB1 cDNA for 48 hrs and lysed. Equivalent amounts of cell lysates (5 ug per lane) were separated by SDS-PAGE and immunoblotted with anti-APBB1.