

## Product datasheet for **TA301421**

### Prostaglandin D Synthase (PTGDS) Rabbit Polyclonal Antibody

#### Product data:

Product Type:	Primary Antibodies
Applications:	WB
Recommended Dilution:	Western Blot: 2 ug/ml
Reactivity:	Human, Feline, Bovine, Rabbit, Dog, Rat, Mouse, Primate
Host:	Rabbit
Isotype:	IgG
Clonality:	Polyclonal
Immunogen:	The epitope recognized by this antibody maps to region within residue 120-190 of human PTGDS. [Swiss-Prot# P41222]
Formulation:	PBS + 30% glycerol and 0.1% sodium azide
Concentration:	lot specific
Purification:	Immunogen affinity purified
Conjugation:	Unconjugated
Storage:	Store at -20°C as received.
Stability:	Stable for 12 months from date of receipt.
Gene Name:	prostaglandin D2 synthase
Database Link:	<a href="#">NP_000945</a> <a href="#">Entrez Gene 19215 Mouse</a> <a href="#">Entrez Gene 25526 Rat</a> <a href="#">Entrez Gene 403740 Dog</a> <a href="#">Entrez Gene 5730 Human</a> <a href="#">P41222</a>



[View online »](#)

**Background:**

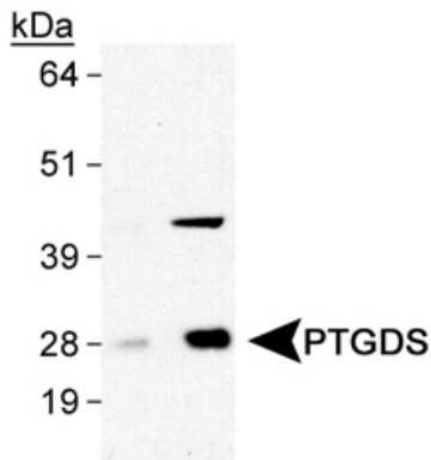
The protein encoded by this gene is a glutathione-independent prostaglandin D synthase that catalyzes the conversion of prostaglandin H<sub>2</sub> (PGH<sub>2</sub>) to prostaglandin D<sub>2</sub> (PGD<sub>2</sub>). PGD<sub>2</sub> functions as a neuromodulator as well as a trophic factor in the central nervous system. PGD<sub>2</sub> is also involved in smooth muscle contraction/relaxation and is a potent inhibitor of platelet aggregation. PTGDS has also been implicated in the development and maintenance of the blood-brain, blood-retina, blood-aqueous humor and blood-testis barrier. Studies with transgenic mice overexpressing this gene suggest that this gene may be also involved in the regulation of non-rapid eye movement (NREM) sleep. It is likely to play important roles in both maturation and maintenance of the central nervous system and male reproductive system. PTGDS is the most abundant protein in the cerebral spinal fluid and recent evidence suggests that PTGDS acts as a Beta-Amyloid chaperone and may have a role in the deposition of Ab plaques in Alzheimer's disease.

**Synonyms:**

L-PGDS; LPGDS; PDS; PGD2; PGDS; PGDS2

**Protein Pathways:**

Arachidonic acid metabolism, Metabolic pathways

**Product images:**

Western Blot: Prostaglandin D Synthase/Lipocalin Antibody TA301421 - Detection of PTGDS in human brain lysates (NB820-59177) using TA301421 at 0.5 and 2.0 ug/ml.