

Product datasheet for **TA301420**

Prostaglandin D Synthase (PTGDS) Rabbit Polyclonal Antibody

Product data:

Product Type:	Primary Antibodies
Applications:	Simple Western, WB
Recommended Dilution:	Simple Western: 1:50, Western Blot: 2 ug/ml
Reactivity:	Human, Primate, Mouse, Rat, Bovine, Porcine, Feline, Equine, Dog
Host:	Rabbit
Isotype:	IgG
Clonality:	Polyclonal
Immunogen:	The epitope recognized by this antibody maps to region within residue 1-50 of human PTGDS. [Swiss-Prot# P41222]
Formulation:	PBS + 30% glycerol and 0.1% sodium azide
Purification:	Immunogen affinity purified
Conjugation:	Unconjugated
Storage:	Store at -20°C as received.
Stability:	Stable for 12 months from date of receipt.
Gene Name:	prostaglandin D2 synthase
Database Link:	NP_000945 Entrez Gene 19215 MouseEntrez Gene 25526 RatEntrez Gene 403740 DogEntrez Gene 5730 Human P41222



[View online »](#)

Background:

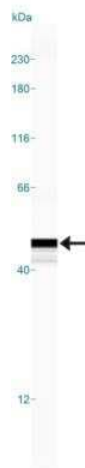
The protein encoded by this gene is a glutathione-independent prostaglandin D synthase that catalyzes the conversion of prostaglandin H₂ (PGH₂) to prostaglandin D₂ (PGD₂). PGD₂ functions as a neuromodulator as well as a trophic factor in the central nervous system. PGD₂ is also involved in smooth muscle contraction/relaxation and is a potent inhibitor of platelet aggregation. PTGDS has also been implicated in the development and maintenance of the blood-brain, blood-retina, blood-aqueous humor and blood-testis barrier. Studies with transgenic mice overexpressing this gene suggest that this gene may be also involved in the regulation of non-rapid eye movement (NREM) sleep. It is likely to play important roles in both maturation and maintenance of the central nervous system and male reproductive system. PTGDS is the most abundant protein in the cerebral spinal fluid and recent evidence suggests that PTGDS acts as a Beta-Amyloid chaperone and may have a role in the deposition of Ab plaques in Alzheimer's disease.

Synonyms:

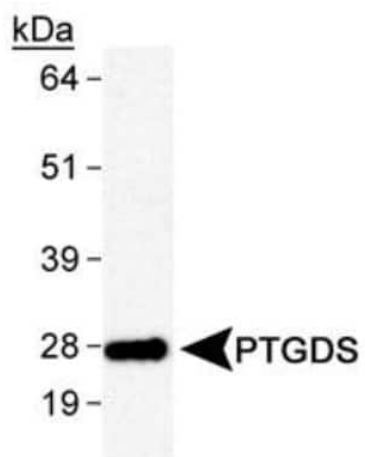
L-PGDS; LPGDS; PDS; PGD₂; PGDS; PGDS2

Protein Pathways:

Arachidonic acid metabolism, Metabolic pathways

Product images:

Simple Western: PGD₂ Synthase/PTGDS Antibody TA301420 - Simple Western lane view shows a specific band for PGD₂/Synthase/PTGDS in 0.5 mg/ml of Human Brain lysate. This experiment was performed under reducing conditions using the 12-230 kDa separation system.



Western Blot: PGD2 Synthase/PTGDS Antibody TA301420 - Detection of Prostaglandin D Synthase/Lipocalin in human brain lysates (NB820-59177) using TA301420.