

Product datasheet for **TA301413**

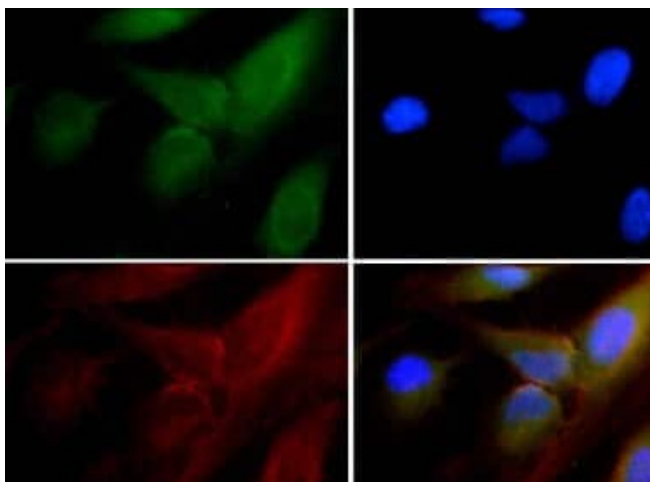
Prostaglandin dehydrogenase 1 (HPGD) Rabbit Polyclonal Antibody

Product data:

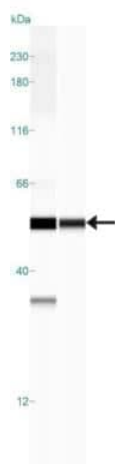
Product Type:	Primary Antibodies
Applications:	ICC/IF, IHC, Simple Western, WB
Recommended Dilution:	Immunohistochemistry: 1:200, Immunocytochemistry/ Immunofluorescence, Western Blot: 1:5000-1:6000, Immunohistochemistry-Paraffin: 1:200, Immunohistochemistry-Frozen, Simple Western: 1:500, Knockdown Validated
Reactivity:	Human
Host:	Rabbit
Isotype:	IgG
Clonality:	Polyclonal
Immunogen:	Purified type I human placental 15-PGDH protein.
Formulation:	Tris-glycine, 150mM NaCl and 0.05% sodium azide
Purification:	protein A purified
Conjugation:	Unconjugated
Storage:	Store at -20°C as received.
Stability:	Stable for 12 months from date of receipt.
Gene Name:	hydroxyprostaglandin dehydrogenase 15-(NAD)
Database Link:	NP_000851 Entrez Gene 3248 Human P15428
Background:	15-Hydroxyprostaglandin dehydrogenase (15-PGDH) is a novel tumor suppressor in the COX-2 pathway. The protein is found in many normal tissues and appears to be down-regulated in colorectal and lung carcinoma tissue.
Synonyms:	15-PGDH; PGDH; PGDH1; PHOAR1; SDR36C1
Protein Families:	Druggable Genome



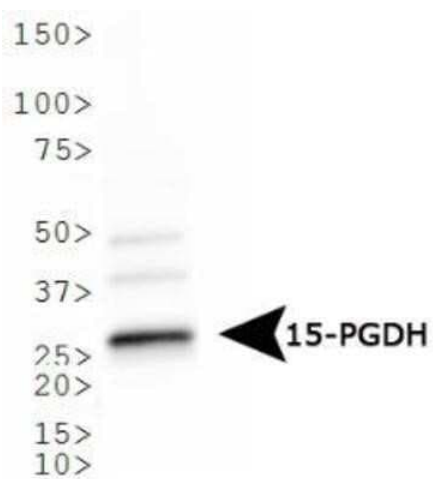
[View online »](#)

Product images:


Immunocytochemistry/Immunofluorescence: 15-PGDH/HPGD Antibody TA301413 - 15-PGDH antibody was tested in HeLa cells with Dylight 488 (green). Nuclei and alpha-tubulin were counterstained with DAPI (blue) and Dylight 550 (red).



Simple Western: 15-PGDH/HPGD Antibody TA301413 - Simple Western lane view shows a specific band for 15-PGDH/HPGD in 0.5 mg/ml of Lovo (left) and HeLa (right) lysate. This experiment was performed under reducing conditions using the 12-230 kDa separation system.



Western Blot: 15-PGDH/HPGD Antibody
TA301413 - Western blot analysis of 15-PGDH in
Lovo cell lysate.