

Product datasheet for **TA301411**

Calcium Sensing Receptor (CASR) Mouse Monoclonal Antibody [Clone ID: HL 1499]

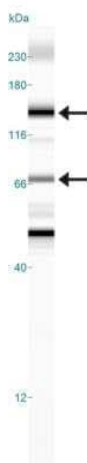
Product data:

Product Type:	Primary Antibodies
Clone Name:	HL 1499
Applications:	ELISA, FC, IP, Simple Western, WB
Recommended Dilution:	Radioimmunoassay, Simple Western: 1:200, Immunoprecipitation: 5 - 10 ug, Flow Cytometry, Western Blot: 1:50 - 1:200, ELISA: 1:100 - 1:2000
Reactivity:	Human, Mouse, Rabbit, Rat
Host:	Mouse
Isotype:	IgG1, kappa
Clonality:	Monoclonal
Immunogen:	N-terminal, extracellular region of human Calcium Sensing Receptor (see reference 2).
Formulation:	Tris-glycine, 150mM NaCl and 0.05% sodium azide
Conjugation:	Unconjugated
Storage:	Store at -20°C as received.
Stability:	Stable for 12 months from date of receipt.
Gene Name:	calcium sensing receptor
Database Link:	NP_000379 Entrez Gene 12374 Mouse Entrez Gene 24247 Rat Entrez Gene 846 Human P41180
Background:	The calcium-sensing receptor (CaSR) is an integral membrane protein that is a member of the G protein-coupled receptor family. It senses changes in the extracellular concentration of calcium ions. The activity of this receptor is mediated by a G-protein that activates a phosphatidylinositol-calcium second messenger system.
Synonyms:	CAR; EIG8; FHH; FIH; GPRC2A; HHC; HHC1; HYPOC1; NSHPT; PCAR1
Protein Families:	Druggable Genome, GPCR, Transmembrane

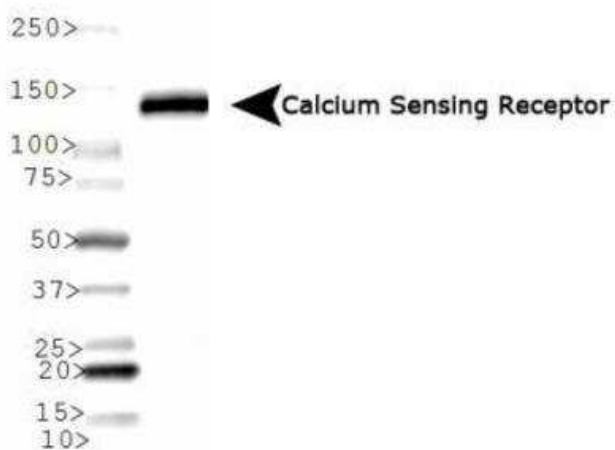


[View online »](#)

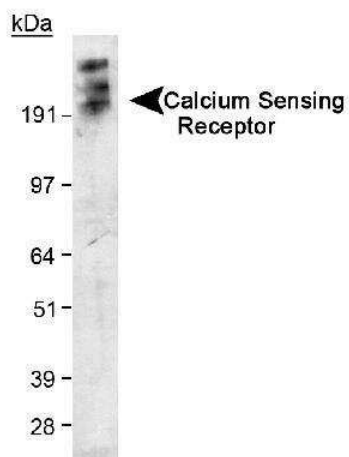
Product images:



Simple Western: Calcium-sensing R/CaSR Antibody (HL 1499) TA301411 - Image shows a specific band for Calcium Sensing Receptor in 0.5 mg/mL of HEK293 lysate. This experiment was performed under reducing conditions using the 12-230 kDa separation system.



Western Blot: Calcium-sensing R/CaSR Antibody (HL 1499) TA301411 - Analysis of Calcium Sensing Receptor expression in rat kidney tissue.



Western Blot: Calcium-sensing R/CaSR Antibody (HL 1499) TA301411 - Detection of Calcium Sensing Receptor in transfected 293 cell lysate using NB 100-1830. ECL exposure, 5 minutes. In this photo, the protein has aggregated and thus the higher MW band as expected.