

Product datasheet for **TA301409**

Aromatase (CYP19A1) Rabbit Polyclonal Antibody

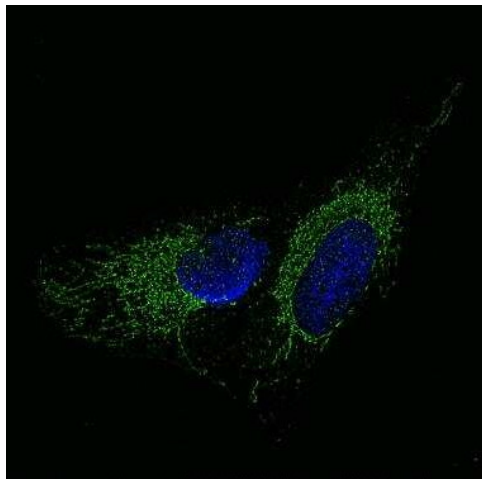
Product data:

Product Type:	Primary Antibodies
Applications:	ICC/IF, IHC, Simple Western, WB
Recommended Dilution:	Immunocytochemistry/ Immunofluorescence: 1:100, Western Blot: 1 ug/ml, Immunohistochemistry: 1:200, Simple Western, Immunohistochemistry-Paraffin: 1:200
Reactivity:	Human, Monkey
Host:	Rabbit
Isotype:	IgG
Clonality:	Polyclonal
Immunogen:	A synthetic peptide made to a C-terminal portion of the human aromatase protein sequence (between residues 400-502).
Formulation:	Tris-citrate / phosphate [pH 7-8] and 0.1% sodium azide
Conjugation:	Unconjugated
Storage:	Store at -20°C as received.
Stability:	Stable for 12 months from date of receipt.
Gene Name:	cytochrome P450 family 19 subfamily A member 1
Database Link:	NP_000094 Entrez Gene 678697 Monkey Entrez Gene 1588 Human P11511
Background:	Aromatase is a key enzyme in steroidogenesis and plays an important role in sexual differentiation, fertility, and carcinogenesis. Many environmental chemicals may influence aromatase activity and thereby disrupt endocrine function.
Synonyms:	ARO; ARO1; CPV1; CYAR; CYP19; CYPXIX; P-450AROM
Protein Families:	Druggable Genome, P450
Protein Pathways:	Androgen and estrogen metabolism, Metabolic pathways

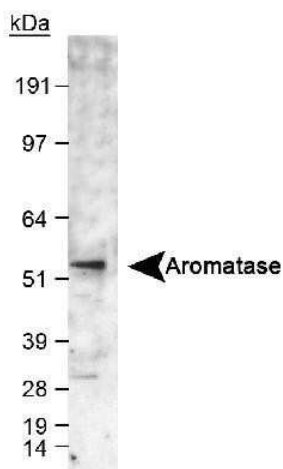


[View online »](#)

Product images:



Immunocytochemistry/Immunofluorescence: Aromatase Antibody TA301409 - U2OS cells were fixed in 4% paraformaldehyde for 10 minutes and permeabilized in 0.05% Triton X-100 in PBS for 5 minutes. The cells were incubated with anti-Aromatase Antibody TA301409 at 2 ug/ml overnight at 4C and detected with an anti-rabbit Dylight 488 (Green) at a 1:1000 dilution for 60 minutes. Nuclei were counterstained with DAPI (Blue). Cells were imaged using a 100X objective and digitally deconvolved.



Western Blot: Aromatase Antibody TA301409 - Detection of aromatase in human fetal temporal lobe lysate using NB 100-1596. ECL exposure, 1-2 minutes.