

Product datasheet for TA301402

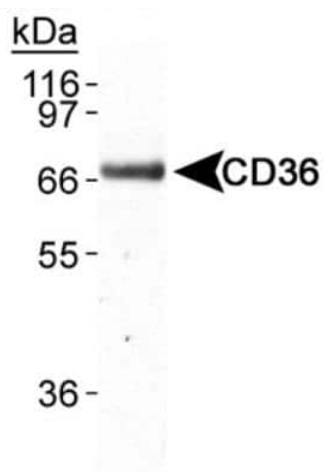
Cd36 Mouse Monoclonal Antibody [Clone ID: D-2712]

Product data:

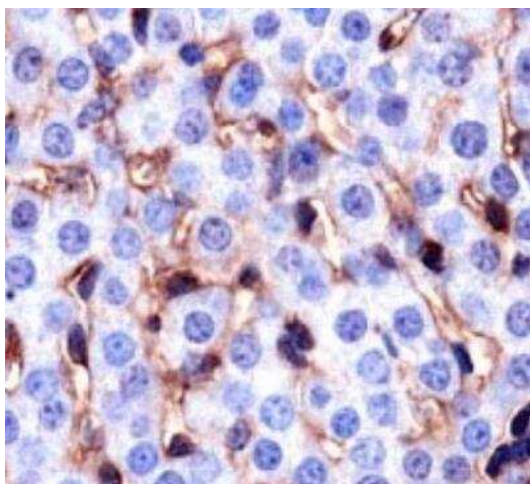
| | |
|-----------------------|---|
| Product Type: | Primary Antibodies |
| Clone Name: | D-2712 |
| Applications: | IHC, IP, WB |
| Recommended Dilution: | Immunohistochemistry-Paraffin: 1:100-1:250, Western Blot: 1:500, Immunoprecipitation: 10-20 ug, Immunohistochemistry: 1:100-1:250 |
| Reactivity: | Mouse, Rat |
| Host: | Mouse |
| Isotype: | IgA, kappa |
| Clonality: | Monoclonal |
| Immunogen: | Adenovirus expressing recombinant mouse CD36. |
| Formulation: | Tris-glycine, 150mM NaCl and 0.05% sodium azide |
| Concentration: | lot specific |
| Purification: | protein G purified |
| Conjugation: | Unconjugated |
| Storage: | Store at -20°C as received. |
| Stability: | Stable for 12 months from date of receipt. |
| Gene Name: | CD36 antigen |
| Database Link: | NP_031669 Entrez Gene 29184 Rat Entrez Gene 12491 Mouse Q08857 |
| Background: | CD36 is a cell surface class B scavenger receptor. CD36 is preferentially found within lipid rafts, which facilitates its association with receptors, signalling and adapter molecules. CD36 binds to collagen, thrombospondin, anionic phospholipids and oxidized LDL. May function as a cell adhesion molecule. Directly mediates cyto adherence of Plasmodium falciparum parasitized erythrocytes. Binds long chain fatty acids and may function in the transport and/or as a regulator of fatty acid transport. |
| Synonyms: | CHDS7; FAT; GP3B; GP4; GPIIB; GPIV; OTTHUMP00000207872; OTTHUMP00000207874; PAS-4; PASIV; SCARB3 |


[View online »](#)

Product images:



Western Blot: CD36 Antibody (D-2712) TA301402 - Detection of CD36 in mouse adipose lysate.



Immunohistochemistry: CD36 Antibody (D-2712) TA301402 - Staining of CD36 in mouse liver.