

## Product datasheet for **TA301401**

### CD36 Rabbit Polyclonal Antibody

#### Product data:

Product Type:	Primary Antibodies
Applications:	FC, ICC/IF, IHC, Immunoblotting, SDS-PAGE, Simple Western, WB
Recommended Dilution:	Western Blot: 1:2000-1:10000, Simple Western: 1:40, Immunohistochemistry, Immunocytochemistry/ Immunofluorescence, SDS-Page, Immunoblotting, Flow Cytometry
Reactivity:	Human
Host:	Rabbit
Isotype:	IgG
Clonality:	Polyclonal
Immunogen:	A synthetic peptide mapping to a region of human CD36 between residues 300-400.
Formulation:	Tris-citrate/phosphate, pH 7-8, 0.1% sodium Azide
Concentration:	lot specific
Purification:	Immunogen affinity purified
Conjugation:	Unconjugated
Storage:	Store at -20°C as received.
Stability:	Stable for 12 months from date of receipt.
Gene Name:	CD36 molecule
Database Link:	<a href="#">NP_000063</a> <a href="#">Entrez Gene 948 Human P16671</a>
Background:	CD36 is a cell surface class B scavenger receptor. CD36 is preferentially found within lipid rafts, which facilitates its association with receptors, signalling and adapter molecules. CD36 binds to collagen, thrombospondin, anionic phospholipids and oxidized LDL. May function as a cell adhesion molecule. Directly mediates cyto adherence of Plasmodium falciparum parasitized erythrocytes. Binds long chain fatty acids and may function in the transport and/or as a regulator of fatty acid transport.
Synonyms:	BDPLT10; CHDS7; FAT; GP3B; GP4; GPIV; PASIV; SCARB3
Protein Families:	Druggable Genome, Transmembrane



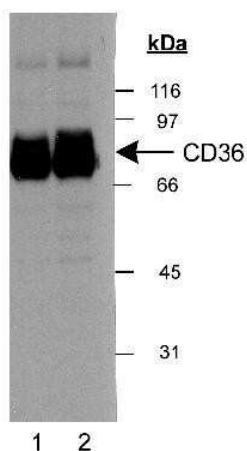
[View online »](#)

**Protein Pathways:** Adipocytokine signaling pathway, ECM-receptor interaction, Hematopoietic cell lineage, PPAR signaling pathway

**Product images:**



Simple Western: CD36 Antibody TA301401 - Image shows a specific band for CD36 in human adipose lysate. This experiment was performed under reducing conditions using the 12-230 kDa separation system.



Western Blot: CD36 Antibody TA301401 - Detection of CD36 in human adipocyte extract (30 ug). Lane 1: 0.5 ug/ml NB 400-145; lane 2: 2 ug/ml NB 400-145. ECL: 3 second exposure.