

## Product datasheet for **TA301271**

### Prealbumin (TTR) Rabbit Monoclonal Antibody [Clone ID: EP2929Y]

#### Product data:

Product Type:	Primary Antibodies
Clone Name:	EP2929Y
Applications:	IHC, WB
Recommended Dilution:	WB: 1:2500 - 1:5000; IP: 1:60; IHC-P: 1:250 - 1:500; ICC: 1:100; FC: 1:50
Reactivity:	Human (Does not react with: Mouse, Rat)
Host:	Rabbit
Isotype:	IgG
Clonality:	Monoclonal
Immunogen:	A synthetic peptide corresponding to residues on the C-terminus of human Transthyretin was used as an immunogen.
Formulation:	PBS 49%, Sodium azide 0.01%, Glycerol 50%, BSA 0.05%
Purification:	Tissue culture supernatant
Conjugation:	Unconjugated
Storage:	Store at -20°C as received.
Stability:	Stable for 12 months from date of receipt.
Predicted Protein Size:	16 kDa
Gene Name:	transthyretin
Database Link:	<a href="#">NP_000362</a> <a href="#">Entrez Gene 22139 Mouse</a> <a href="#">Entrez Gene 24856 Rat</a> <a href="#">Entrez Gene 7276 Human</a> <a href="#">P02766</a>



[View online »](#)

**Background:**

Transthyretin (prealbumin/TTR) is a hormone-binding protein that participates in the plasma transport of both thyroxine and retinol (vitamin A). Transthyretin concentrations are disproportionately high in human ventricular CSF. It is reported to be either selectively transported across or synthesized within the blood-CSF barrier (3). Over 80 different disease-causing mutations in transthyretin have been reported. The vast majority is inherited in an autosomal dominant manner and is related to amyloid deposition, affecting predominantly peripheral nerve and/or the heart. A small portion of transthyretin mutations are apparently non-amyloidogenic (4). The human amyloid disorders, familial amyloid polyneuropathy, familial amyloid cardiomyopathy and senile systemic amyloidosis, are caused by insoluble transthyretin fibrils (2). Transthyretin has a structural complementarity to double-helical DNA, where the proposed binding site is composed of two symmetry-related beta-sheets containing a pair of helically disposed arms (1).

**Synonyms:**

CTS; CTS1; HEL111; HsT2651; PALB; TBPA

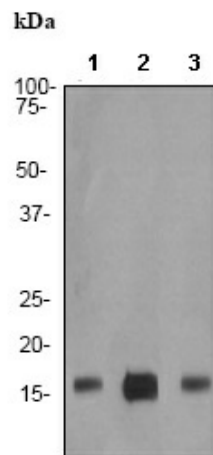
**Note:**

Does not react with Mouse, Rat

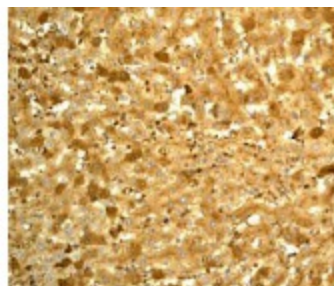
**Protein Families:**

ES Cell Differentiation/IPS, Secreted Protein

**Product images:**



Western blot - Prealbumin antibody [EP2929Y]; All lanes : Anti-Prealbumin antibody [EP2929Y] at 1/5000 dilution. Lane 1 : human heart lysate. Lane 2 : human placenta lysate. Lane 3 : human brain lysate. Lysates/proteins at 10 ug per lane. Secondary. goat anti-rabbit HRP at 1/2000 dilution. Predicted band size : 16 kDa. Observed band size : 16 kDa.



Immunohistochemistry (Formalin/PFA-fixed paraffin-embedded sections) - Prealbumin antibody [EP2929Y]; TA301271 at 1/250 dilution staining Prealbumin in human liver by Immunohistochemistry, Paraffin-embedded tissue.