

Product datasheet for **TA301123**

Cyclin D1 (CCND1) Rabbit Monoclonal Antibody [Clone ID: EPR2241]

Product data:

Product Type:	Primary Antibodies
Clone Name:	EPR2241
Applications:	IHC, WB
Recommended Dilution:	WB: 1:10000; IP: 1:40; ICC/IF: 1:100; IHC-P: 1:100
Reactivity:	Mouse, Rat, Human
Host:	Rabbit
Isotype:	IgG
Clonality:	Monoclonal
Immunogen:	A synthetic peptide corresponding to residues near the C-terminus of human Cyclin D1 was used as an immunogen.
Formulation:	pH: 7.40 Preservative: 0.01% Sodium azide Constituents: 50% Glycerol, 0.05% BSA
Purification:	Tissue culture supernatant
Conjugation:	Unconjugated
Storage:	Store at -20°C as received.
Stability:	Stable for 12 months from date of receipt.
Predicted Protein Size:	34 kDa
Gene Name:	cyclin D1
Database Link:	NP_444284 Entrez Gene 12443 Mouse Entrez Gene 58919 Rat Entrez Gene 595 Human P24385



[View online »](#)

Background: Cyclin D1 belongs to the Cyclin D family. Cyclin D1 is required for the cell cycle G1/S transition (1). Cyclin D1 forms a serine/threonine kinase holoenzyme complex with and functions as a regulatory subunit of CDK4 or CDK6. Cyclin D1 also phosphorylates and inactivates the retinoblastoma protein and promotes progression through the G1/S phase (2-3). Amplification or overexpression of cyclin D1 plays a pivotal role in the development of various human cancers including parathyroid adenoma, breast cancer, colon cancer, lymphoma, melanoma, and prostate cancer (4). Over-expression of cyclin D1 is known to correlate with the early onset of cancer and risk of tumor progression and metastasis (5). Cyclin D1 also associates with, and regulates the activity of transcription factors, coactivators and corepressors that govern histone acetylation and chromatin remodeling proteins (6-7)

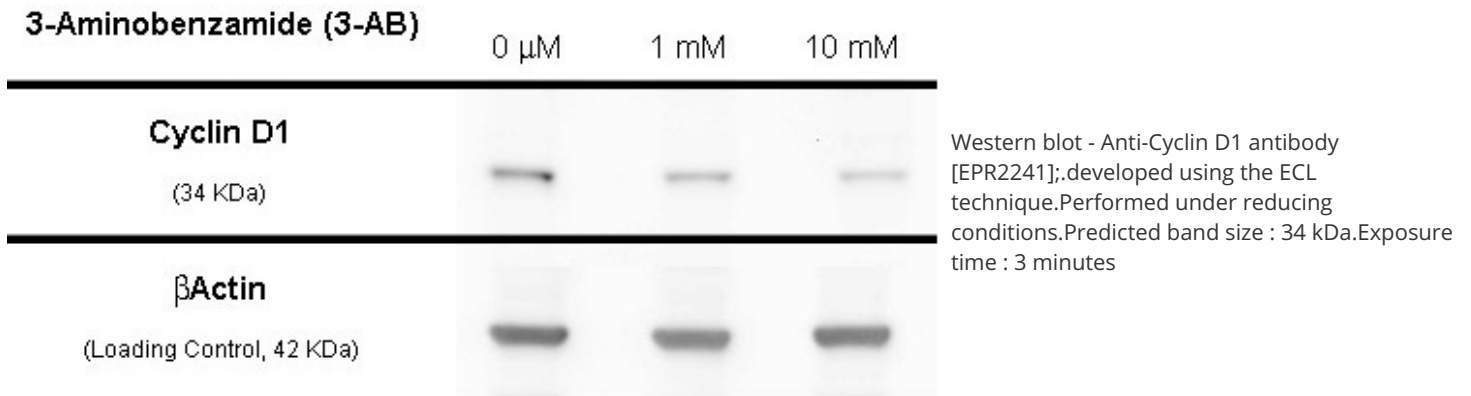
Synonyms: BCL1; D11S287E; PRAD1; U21B31

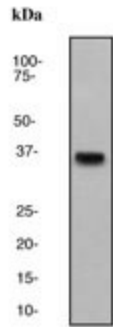
Note: Is unsuitable for Flow Cyt.

Protein Families: Druggable Genome, Stem cell - Pluripotency, Stem cell relevant signaling - DSL/Notch pathway, Stem cell relevant signaling - JAK/STAT signaling pathway, Stem cell relevant signaling - Wnt Signaling pathway

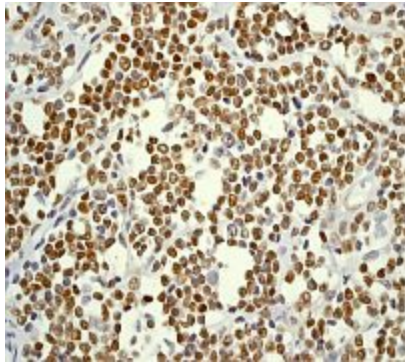
Protein Pathways: Acute myeloid leukemia, Bladder cancer, Cell cycle, Chronic myeloid leukemia, Colorectal cancer, Endometrial cancer, Focal adhesion, Glioma, Jak-STAT signaling pathway, Melanoma, Non-small cell lung cancer, p53 signaling pathway, Pancreatic cancer, Pathways in cancer, Prostate cancer, Small cell lung cancer, Thyroid cancer, Viral myocarditis, Wnt signaling pathway

Product images:

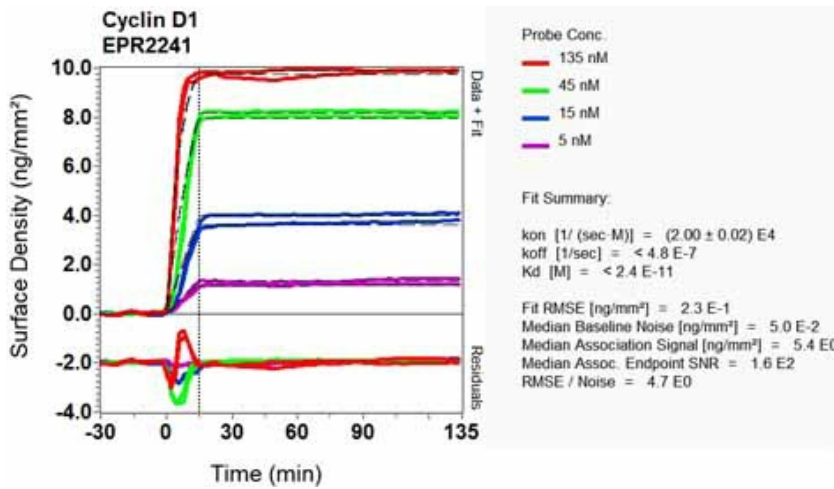




Western blot - Anti-Cyclin D1 antibody [EPR2241]; Anti-Cyclin D1 antibody [EPR2241] at 1/10000 dilution + MCF7 cell lysate at 10 ug.Secondary.HRP labelled goat anti-rabbit at 1/2000 dilution.Predicted band size : 34 kDa.



Immunohistochemistry (Formalin/PFA-fixed paraffin-embedded sections) - Anti-Cyclin D1 antibody [EPR2241]; Immunohistochemical analysis of paraffin-embedded Human mantle cell lymphoma tissue labelling Cyclin D1 with TA301123 at 1/100 dilution.



Other-Anti-Cyclin D1 antibody [EPR2241] (TA301123); Equilibrium disassociation constant (KD).