

## Product datasheet for **TA301019**

### **PRA1 (RABAC1) Rabbit Monoclonal Antibody [Clone ID: EPR1747Y]**

#### **Product data:**

Product Type:	Primary Antibodies
Clone Name:	EPR1747Y
Applications:	WB
Recommended Dilution:	WB: 1:1000 - 1:20000; IP: 1:30; FC: 1:100
Reactivity:	Mouse, Rat, Human
Host:	Rabbit
Isotype:	IgG
Clonality:	Monoclonal
Immunogen:	A synthetic peptide corresponding to residues near the C-terminus of human PRA1 was used as an immunogen.
Formulation:	PBS 49%, Sodium azide 0.01%, Glycerol 50%, BSA 0.05%
Purification:	Tissue culture supernatant
Conjugation:	Unconjugated
Storage:	Store at -20°C as received.
Stability:	Stable for 12 months from date of receipt.
Predicted Protein Size:	21 kDa
Gene Name:	Rab acceptor 1
Database Link:	<a href="#">NP_006414</a> <a href="#">Entrez Gene 14470 Mouse</a> <a href="#">Entrez Gene 83583 Rat</a> <a href="#">Entrez Gene 10567 Human</a> <a href="#">Q9UI14</a>
Background:	PRA1 (prenylated Rab acceptor) is a general regulator of Rab proteins. It has been shown that PRA1 interacts with Rab proteins and with VAMP2. Therefore PRA1 is probably an important factor for membrane traffic, linking together the function of Rab proteins and SNAREs (1). Human cells contain more than 60 small G proteins of the Rab family, which are localized to the surfaces of distinct membrane compartments and regulate transport vesicle formation, motility, docking and fusion. Prenylated Rabs also occur in the cytosol bound to GDI (guanine nucleotide dissociation inhibitor), which binds to Rabs in their inactive state (2).
Synonyms:	PRA1; PRAF1; YIP3

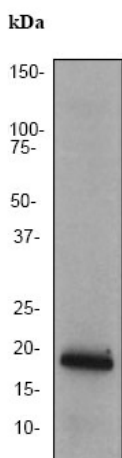


[View online »](#)

**Note:** Is unsuitable for ICC or IHC-P.

**Protein Families:** Transmembrane

### Product images:



Western blot - PRA1 antibody [EPR1747Y] - Carboxyterminal end; Anti-PRA1 antibody [EPR1747Y] - Carboxyterminal end at 1/2000 dilution + 293 cell lysate at 10 ug. Secondary.HRP labelled goat anti-rabbit at 1/2000 dilution.Predicted band size : 21 kDa.Observed band size : 21 kDa.