

Product datasheet for **TA301010**

Rb2 p130 (RBL2) Rabbit Monoclonal Antibody [Clone ID: EP2141Y]

Product data:

Product Type:	Primary Antibodies
Clone Name:	EP2141Y
Applications:	IHC, WB
Recommended Dilution:	WB: 1:500; IHC: 1:50 100; FC: 1:20
Reactivity:	Human (Does not react with: Mouse, Rat)
Host:	Rabbit
Isotype:	IgG
Clonality:	Monoclonal
Immunogen:	A synthetic peptide corresponding to residues near the C-terminus of human Rb2 / p130 was used as an immunogen.
Formulation:	PBS 49%, Sodium azide 0.01%, Glycerol 50%, BSA 0.05%
Purification:	Tissue culture supernatant
Conjugation:	Unconjugated
Storage:	Store at -20°C as received.
Stability:	Stable for 12 months from date of receipt.
Predicted Protein Size:	128 kDa
Gene Name:	RB transcriptional corepressor like 2
Database Link:	NP_005602 Entrez Gene 19651 Mouse Entrez Gene 81758 Rat Entrez Gene 5934 Human Q08999



[View online »](#)

Background:

p130 is a tumor suppressor of the pocket protein family whose expression is posttranscriptionally regulated and largely G0 restricted. The mechanism of down-regulation of p130 expression in proliferating cells was investigated and results indicate that the decline of p130 expression as G0 cells reenter the cell cycle is due to a decrease in protein stability. In vitro polyubiquitination of p130 by SCF(Skp2) was specifically dependent on phosphorylation of p130 on Serine 672 (1). The retinoblastoma family of proteins including pRB, p107 and p130 undergoes cell cycle dependent phosphorylation during the mid-G1 to S phase transition. This phosphorylation is dependent upon the activity of cyclin D/cdk4. In contrast to pRB and p107, p130 is phosphorylated during G0 and the early G1 phase of the cell cycle. Also it is thought that p130, forming a complex with Rad50 through RINT-1, blocks telomerase-independent telomere lengthening in normal cells. Data indicates complementary roles for the Rb/E2F pathway in the control of telomere length (3).

Synonyms:

P130; Rb2

Note:

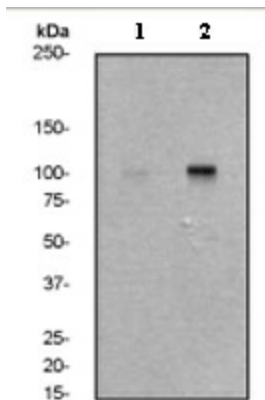
Does not react with Mouse, Rat

Protein Families:

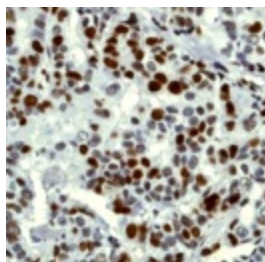
Druggable Genome, Transcription Factors

Protein Pathways:

Cell cycle, TGF-beta signaling pathway

Product images:


Western blot - p130 antibody [EP2141Y]; Anti-p130 antibody [EP2141Y] at 1/500 dilution + Jurkat cell lysate at 10 ug. Secondary.HRP labelled goat anti-rabbit at 1/2000 dilution. Predicted band size : 128 kDa. Observed band size : 128 kDa.



Immunohistochemistry (Formalin/PFA-fixed paraffin-embedded sections) - p130 antibody [EP2141Y]; Immunohistochemical staining of paraffin-embedded human breast carcinoma using TA301010 at 1/50 dilution.