

Product datasheet for **TA300879**

LDHA Rabbit Monoclonal Antibody [Clone ID: EP1563Y]

Product data:

Product Type:	Primary Antibodies
Clone Name:	EP1563Y
Applications:	IHC, WB
Recommended Dilution:	ICC/IF: 1:100 - 1:250; WB: 1:1000 - 1:5000; IP: 1:70; IHC-P: 1:100 - 1:250; FC: 1:30
Reactivity:	Mouse, Rat, Human
Host:	Rabbit
Isotype:	IgG
Clonality:	Monoclonal
Immunogen:	A synthetic peptide corresponding to residues in human LDH-A was used as immunogen.
Formulation:	pH: 7.40 Preservative: 0.01% Sodium azide Constituents: 50% Glycerol, 0.05% BSA
Purification:	Tissue culture supernatant
Conjugation:	Unconjugated
Storage:	Store at -20°C as received.
Stability:	Stable for 12 months from date of receipt.
Predicted Protein Size:	37 kDa
Gene Name:	lactate dehydrogenase A
Database Link:	NP_005557 Entrez Gene 16828 Mouse Entrez Gene 24533 Rat Entrez Gene 3939 Human P00338



[View online »](#)

Background:

Lactate dehydrogenase (LDH) is an ubiquitous enzyme commonly found in wide variety of organisms, including plants and microbes. LDH is involved in the interconversion of the pyruvate and NADH to lactate and NAD⁺. It is also called Hydroxybutyrate Dehydrogenase (HBD), due to the fact that it can catalyze the oxidation of hydroxybutyrate (1). In mammals, three types of LDH subunits (35 kDa) are encoded by the genes Ldh-A, Ldh-B, and Ldh-C, forming various tetrameric isoenzymes (140 kDa). Lactate dehydrogenase A (LDH-A, muscle subunit, LDH-M) is involved in the final step of anaerobic glycolysis and catalyzes the conversion of L-lactate and NAD to pyruvate and NADH. While it is predominantly expressed in muscle tissue, it is hormonally regulated in rodents and overexpressed during mammary gland tumorigenesis (2). A mutation that cause deficiency in LDH-A has been implicated in exertional myoglobinuria (3).

Synonyms:

GSD11; HEL-S-133P; LDHM; PIG19

Protein Families:

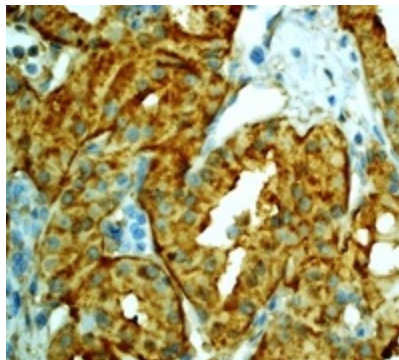
Druggable Genome

Protein Pathways:

Cysteine and methionine metabolism, Glycolysis / Gluconeogenesis, Metabolic pathways, Propanoate metabolism, Pyruvate metabolism

Product images:

Western blot - Anti-Lactate Dehydrogenase antibody [EP1563Y]; Anti-Lactate Dehydrogenase antibody [EP1563Y] at 1/1000 dilution + A549 cell lysate at 10 ug. Secondary.HRP labelled goat anti-rabbit at 1/2000 dilution.Predicted band size : 37 kDa.



Immunohistochemistry (Formalin/PFA-fixed paraffin-embedded sections) - Anti-Lactate Dehydrogenase antibody [EP1563Y]; Immunohistochemical analysis of paraffin-embedded Human kidney carcinoma labelling Lactate Dehydrogenase with TA300879 at 1/100 dilution.