

Product datasheet for **TA300779**

CD8A Rabbit Monoclonal Antibody [Clone ID: EP1150Y]

Product data:

| | |
|-----------------------|--|
| Product Type: | Primary Antibodies |
| Clone Name: | EP1150Y |
| Applications: | IHC, WB |
| Recommended Dilution: | WB: 1:1000 - 1:10000; IHC-P: 1:250 - 1:500; ICC: 1:50 - 1:100 |
| Reactivity: | Human (Does not react with: Mouse, Rat) |
| Host: | Rabbit |
| Isotype: | IgG |
| Clonality: | Monoclonal |
| Immunogen: | A synthetic peptide corresponding to residues near the C-terminus of human CD8 was used as an immunogen |
| Formulation: | PBS 49%, Sodium azide 0.01%, Glycerol 50%, BSA 0.05% |
| Purification: | Tissue culture supernatant |
| Conjugation: | Unconjugated |
| Storage: | Store at -20°C as received. |
| Stability: | Stable for 12 months from date of receipt. |
| Gene Name: | CD8a molecule |
| Database Link: | NP_741969 Entrez Gene 925 Human P01732 |
| Background: | The T cell coreceptor CD8 is a cell-surface glycoprotein expressed either as a disulfide-linked homodimer of two CD8alpha monomers, or a heterodimer of CD8alpha and CD8beta. These receptors interact with ligands, such as major histocompatibility complex (MHC) class I, on the outside of the cell, with proteins inside the cell, such as the tyrosine kinase p56lck, and possibly with proteins on the same cell-surface (1). CD8 plays an important role in T cell development in the thymus and T cell activation in the periphery (2). |
| Synonyms: | CD8; Leu2; MAL; p32 |
| Note: | Is unsuitable for Flow Cyt or IP. |

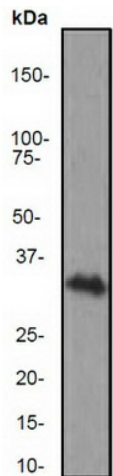


[View online »](#)

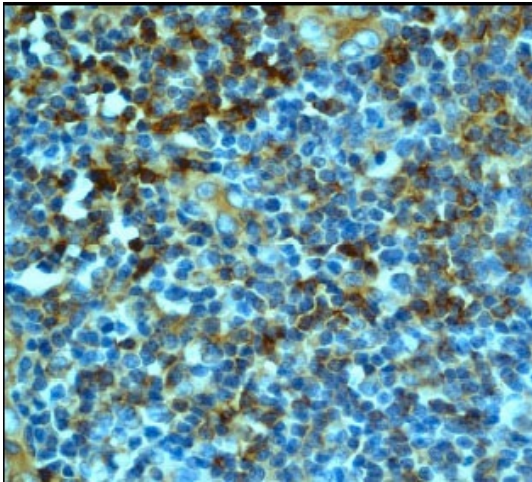
Protein Families: Adult stem cells, Druggable Genome, ES Cell Differentiation/IPS, Secreted Protein, Transmembrane

Protein Pathways: Antigen processing and presentation, Cell adhesion molecules (CAMs), Hematopoietic cell lineage, Primary immunodeficiency, T cell receptor signaling pathway

Product images:



Western blot - CD8 antibody [EP1150Y]; Anti-CD8 antibody [EP1150Y] at 1/1000 dilution + THP-1 lysate at 10 ug. Predicted band size : 26 kDa.



Immunohistochemistry (Formalin/PFA-fixed paraffin-embedded sections) - CD8 antibody [EP1150Y]; Human tonsil with TA300779 at 1/250 dilution.