

Product datasheet for **TA300580**

MEK4 (MAP2K4) Rabbit Monoclonal Antibody [Clone ID: EP615Y]

Product data:

Product Type:	Primary Antibodies
Clone Name:	EP615Y
Applications:	FC, IHC, WB
Recommended Dilution:	WB: 1:1000; FC: 1:1000
Reactivity:	Mouse, Rat, Human
Host:	Rabbit
Isotype:	IgG
Clonality:	Monoclonal
Immunogen:	A synthetic peptide corresponding to residues in the C-term of human MKK4 was used as immunogen.
Formulation:	PBS 49%, Sodium azide 0.01%, Glycerol 50%, BSA 0.05%
Conjugation:	Unconjugated
Storage:	Store at -20°C as received.
Stability:	Stable for 12 months from date of receipt.
Predicted Protein Size:	44 kDa
Gene Name:	mitogen-activated protein kinase kinase 4
Database Link:	NP_003001 Entrez Gene 26398 Mouse Entrez Gene 287398 Rat Entrez Gene 6416 Human P45985
Background:	MKK4, also known as JNKK1 and SEK1, is a dual specificity kinase that belongs to the Ser/Thr protein kinase family. MKK4 is a direct activator of MAP kinases in response to various environmental stresses or mitogenic stimuli. MKK4 phosphorylate and activate p38 MAP kinase and JNK but not ERK 1/2 (1-2). JNK is activated by dual phosphorylation at Thr and Tyr by MKK4 and MKK7; although MKK4 will preferentially phosphorylate Tyr (3). MKK4 is also known to be a tumor suppressor, as mutations inactivating the MKK4 gene have been found in 5% of a wide variety of tumor types (4).
Synonyms:	JNKK; JNKK1; MAPKK4; MEK4; MKK4; PRKMK4; SAPKK-1; SAPKK1; SEK1; SERK1; SKK1
Note:	Is unsuitable for ICC or IP.

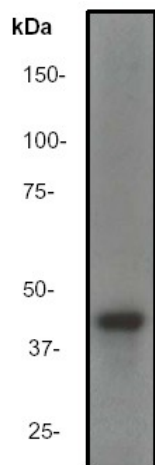


[View online »](#)

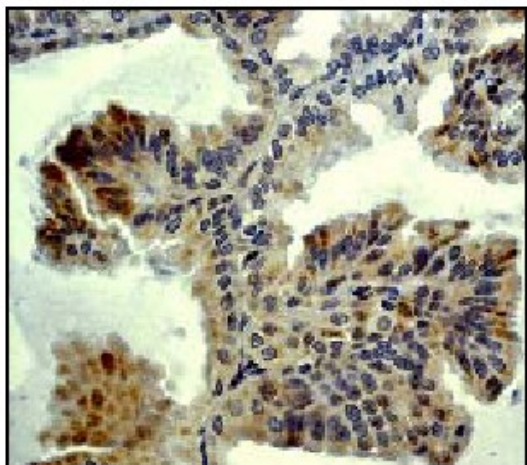
Protein Families: Druggable Genome, Protein Kinase

Protein Pathways: Epithelial cell signaling in Helicobacter pylori infection, ErbB signaling pathway, Fc epsilon RI signaling pathway, GnRH signaling pathway, MAPK signaling pathway, Toll-like receptor signaling pathway

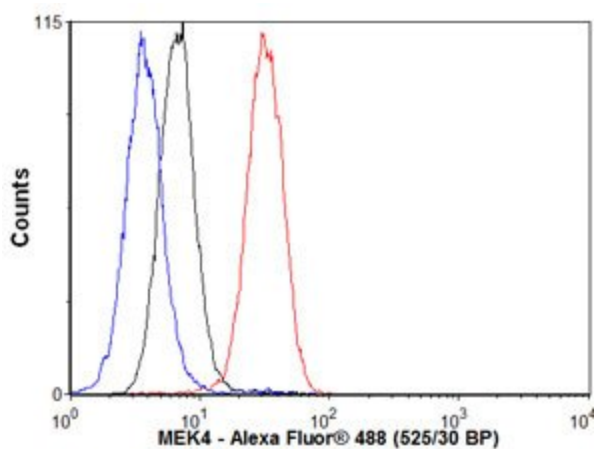
Product images:



Western blot - SEK1 / MKK4 antibody [EP615Y]; Anti-MEK4 antibody [EP615Y] at 1/1000 dilution + HeLa cell lysate. Predicted band size : 44 kDa. Observed band size : 44 kDa.



Immunohistochemistry - MEK4 antibody [EP615Y]; IHC-P of lung adenocarcinoma using anti-MKK4 (C term) TA300580 at 1/100.



Flow Cytometry - Anti-MEK4 antibody; Overlay histogram showing K562 cells stained with TA300580 (red line). The secondary antibody used was Alexa Fluor 488 goat anti-rabbit IgG (H&L) at 1:2000. Isotype control antibody (black line) was rabbit IgG (monoclonal) used under the same conditions. Unlabelled sample (blue line) was also used as a control.