

Product datasheet for **TA300534**

SHP2 (PTPN11) Rabbit Monoclonal Antibody [Clone ID: Y477]

Product data:

Product Type:	Primary Antibodies
Clone Name:	Y477
Applications:	WB
Recommended Dilution:	WB: 1:500; IP: 1:20
Reactivity:	Mouse, Rat, Human
Host:	Rabbit
Isotype:	IgG
Clonality:	Monoclonal
Immunogen:	A synthetic peptide corresponding to residues near the N-term of human SHP-2 was used as immunogen. This antibody is predicted to detect splice isoforms 2 and 3 based on sequence analysis.
Formulation:	PBS 49%,Sodium azide 0.01%,Glycerol 50%,BSA 0.05%
Conjugation:	Unconjugated
Storage:	Store at -20°C as received.
Stability:	Stable for 12 months from date of receipt.
Predicted Protein Size:	68 kDa
Gene Name:	protein tyrosine phosphatase, non-receptor type 11
Database Link:	NP_002825 Entrez Gene 19247 Mouse Entrez Gene 25622 Rat Entrez Gene 5781 Human Q06124
Background:	SHP-2 (also called PTP2C, SH-PTP2, PTP1D, SH-PTP3, Syp and PTPN11) is a protein tyrosine phosphatase (PTP) expressed in most cell types (unlike SHP-1), (1). SHP-2 is involved in the signal transduction stimulated by EGF, PDGF and Insulin. After cell stimulation, SHP-2 (as well as SHP-1), translocates from cytosol to the plasma membrane and binds to tyrosine-phosphorylated receptors through their SH2 domains, becoming activated in the process (2). When phosphorylated, SHP-2 has been shown to bind Grb2, EGFR, PDGFR, IRS-1 via its SH2 domain (3). Overexpression of SHP-2 leads to Juvenile Myelo-monocytic Leukemia and Noonan syndrome (4-5).



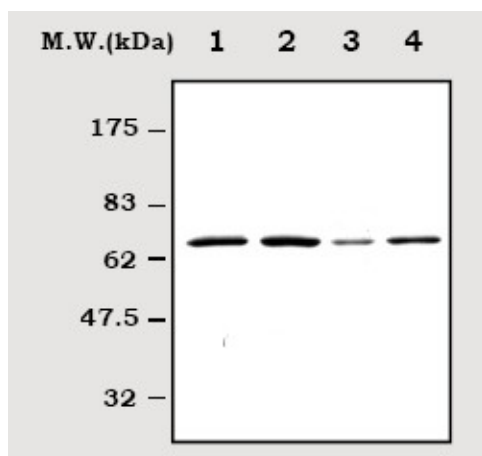
[View online »](#)

Synonyms: BPTP3; CFC; JMML; METCDS; NS1; PTP-1D; PTP2C; SH-PTP2; SH-PTP3; SHP2

Protein Families: Druggable Genome, Phosphatase

Protein Pathways: Adipocytokine signaling pathway, Chronic myeloid leukemia, Epithelial cell signaling in Helicobacter pylori infection, Jak-STAT signaling pathway, Leukocyte transendothelial migration, Natural killer cell mediated cytotoxicity, Neurotrophin signaling pathway, Renal cell carcinoma

Product images:



Western blot - SHP2 antibody [Y477]; Anti-SHP2 antibody [Y477] at 1/1000 dilution + Jurkat cell lysate. Predicted band size : 68 kDa. Observed band size : 65 kDa.