

Product datasheet for **TA300510**

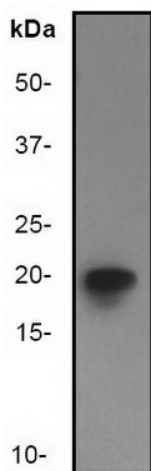
EIF5A Rabbit Polyclonal Antibody

Product data:

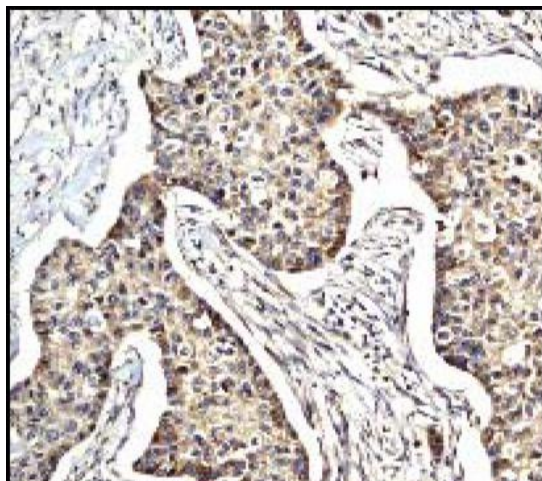
Product Type:	Primary Antibodies
Applications:	IHC, WB
Recommended Dilution:	WB: 1:1000; ICC: 1:100 - 1:250; FC: 1:20; IHC-P: Use at an assay dependent dilution
Reactivity:	Mouse, Rat, Human
Host:	Rabbit
Isotype:	IgG
Clonality:	Polyclonal
Immunogen:	A synthetic peptide corresponding to residues close to the C-terminus of human eIF-5A was used as an immunogen.
Formulation:	PBS 49%, Sodium azide 0.01%, Glycerol 50%, BSA 0.05%
Purification:	Protein A purified
Conjugation:	Unconjugated
Storage:	Store at -20°C as received.
Stability:	Stable for 12 months from date of receipt.
Predicted Protein Size:	18 kDa
Gene Name:	eukaryotic translation initiation factor 5A
Database Link:	NP_001961 Entrez Gene 276770 Mouse Entrez Gene 287444 Rat Entrez Gene 1984 Human P63241
Background:	The human eukaryotic translation initiation factor 5A (eIF-5A) is an 18 kDa protein (1). eIF-5A precursor [(ec-eIF-5A(lys))] is the only cellular protein known to contain a specific lysine residue which is transformed into the unique amino acid hypusine [N-(4-amino-2-hydroxybutyl)-lysine] by a series of post-translational reactions (2). eIF-5A promotes the formation of the first peptide bond during the initial stage of protein synthesis (3).
Synonyms:	EIF-5A; EIF5A1; eIF5AI
Note:	Is unsuitable for IP.



[View online »](#)

Product images:

Western blot - eIF5A antibody; Anti-eIF5A antibody at 1/1000 dilution + Jurkat cell lysate. Predicted band size : 18 kDa. Observed band size : 18 kDa.



Immunohistochemistry (Paraffin-embedded sections) - eIF5A antibody; TA300510, at a 1/100 dilution, staining human eIF5A in lung carcinoma by Immunohistochemistry, Paraffin embedded tissue