

Product datasheet for **TA300475**

BAD Rabbit Monoclonal Antibody [Clone ID: Y208]

Product data:

Product Type:	Primary Antibodies
Clone Name:	Y208
Applications:	FC, IF, IHC, WB
Recommended Dilution:	WB: 1:2000 - 1:5000; IHC-P: Use at an assay dependent dilution; ICC/IF: 1:250 - 1:500; FC: 1:20 - 1:50; IP: 1:100
Reactivity:	Mouse, Rat, Dog, Human
Host:	Rabbit
Isotype:	IgG
Clonality:	Monoclonal
Immunogen:	A synthetic peptide corresponding to residues in the N-term of human Bad was used as immunogen. The antibody does not cross-react with other Bcl-2 members.
Formulation:	PBS 49%, Sodium azide 0.01%, Glycerol 50%, BSA 0.05%
Purification:	Protein A purified
Conjugation:	Unconjugated
Storage:	Store at -20°C as received.
Stability:	Stable for 12 months from date of receipt.
Predicted Protein Size:	18 kDa
Gene Name:	BCL2 associated agonist of cell death
Database Link:	NP_116784 Entrez Gene 12015 Mouse Entrez Gene 64639 Rat Entrez Gene 483763 Dog Entrez Gene 572 Human Q92934
Background:	Bad is a pro-apoptotic member of the Bcl-2 family. Bad will bind preferentially Bcl-xL over Bcl-2 through its partial (9-16 a.a) BH3 domain. Additionally, Bad can reverse the death repressor activity of Bcl-xL but not of Bcl-2. Upon dephosphorylation, activated Bad translocates to the mitochondria and displace Bcl-2 from tBid sequestration to initiate mitochondrial dysfunction. The switching on/off of its phosphorylation by growth/survival factors regulates Bad activity.



[View online »](#)

Synonyms: BBC2; BCL2L8

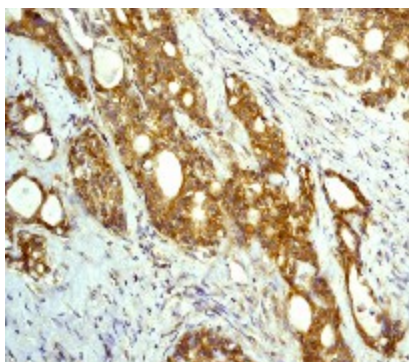
Protein Families: Druggable Genome

Protein Pathways: Acute myeloid leukemia, Alzheimer's disease, Amyotrophic lateral sclerosis (ALS), Apoptosis, Chronic myeloid leukemia, Colorectal cancer, Endometrial cancer, ErbB signaling pathway, Focal adhesion, Insulin signaling pathway, Melanoma, Neurotrophin signaling pathway, Non-small cell lung cancer, Pancreatic cancer, Pathways in cancer, Prostate cancer, VEGF signaling pathway

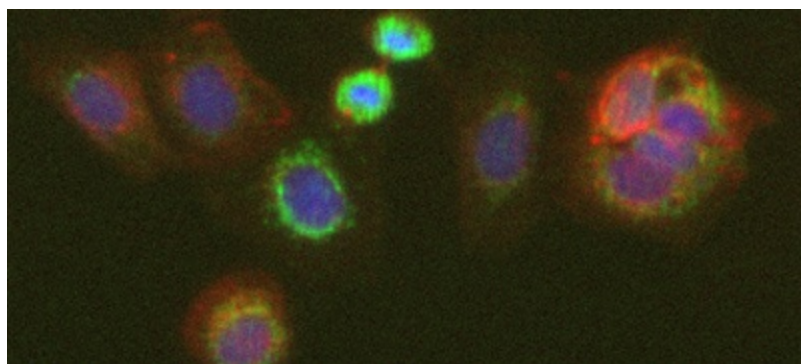
Product images:



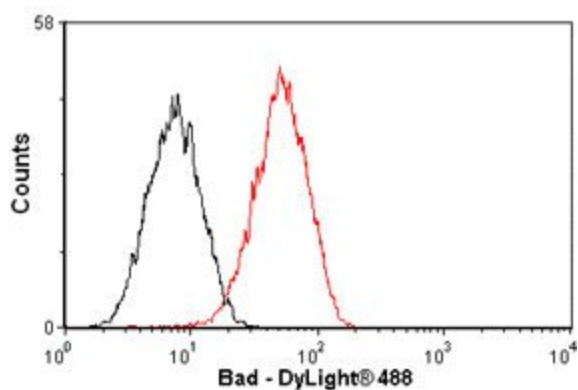
Western blot - Bad antibody [Y208]; Anti-Bad [Y208] antibody at 1/5000 dilution + HeLa cell lysate. Predicted band size : 18 kDa. Observed band size : 23 kDa.



Immunohistochemistry (Paraffin-embedded sections) - Bad antibody [Y208]; Immunohistochemical staining of paraffin-embedded human lymphoma using TA300475 at 1/100 dilution.



ICC/IF image of TA300475 stained MCF7 cells. The cells were incubated with the antibody overnight at 4. The secondary antibody (green) was Alexa Fluor 488 goat anti-rabbit IgG (H+L) used at 1:1000 for 1h. Alexa Fluor 594 WGA was used to label plasma membranes (red) at 1:200 for 1h. DAPI was used to stain the cell nuclei (blue) at a concentration of 1.43uM.



Flow Cytometry-Bad antibody (TA300475); Overlay histogram showing MCF-7 cells stained with TA300475 (red line). The secondary antibody used was DyLight 488 goat anti-rabbit IgG (H+L) at 1:500. Isotype control antibody (black line) was rabbit monoclonal IgG (1ug/1x10⁶ cells) used under the same conditions. This antibody gave a decreased signal in MCF-7 cells under the same conditions.