

## Product datasheet for **TA300391**

### Caveolin 1 (CAV1) Rabbit Monoclonal Antibody [Clone ID: E249]

#### Product data:

Product Type:	Primary Antibodies
Clone Name:	E249
Applications:	IHC, WB
Recommended Dilution:	ICC/IF: Use at an assay dependent dilution; IHC-P: 1:250; ICC: 1:100; WB: 1:1000 - 1:10000
Reactivity:	Human (Does not react with: Rat)
Host:	Rabbit
Isotype:	IgG fraction
Clonality:	Monoclonal
Immunogen:	A synthetic peptide corresponding to residues near C-terminus of human Caveolin-1 was used as immunogen. The antibody should recognize both alpha and beta form of Caveolin-1.
Formulation:	PBS 49%, Sodium azide 0.01%, Glycerol 50%, BSA 0.05%
Purification:	IgG fraction
Conjugation:	Unconjugated
Storage:	Store at -20°C as received.
Stability:	Stable for 12 months from date of receipt.
Gene Name:	caveolin 1
Database Link:	<a href="#">NP_001744</a> <a href="#">Entrez Gene 25404 Rat</a> <a href="#">Entrez Gene 857 Human</a> <a href="#">Q03135</a>
Background:	Caveolins make up a family of proteins that are principal structural components of hairpin-like domains in the plasma membrane (1). It is believed that caveolins serve as scaffolding proteins for the integration of signal transduction. Three members of caveolins (caveolin-1, -2 and -3) have been identified, possessing different tissue distributions (2). Caveolins interact with multiple signaling molecules, such as the G-protein alpha subunit (1), tyrosine kinase receptors, PKCs, Src family tyrosine kinases and eNOS (2,3). Caveolin-1 has been implicated in the pathogenesis of mammary epithelial cell hyperplasia (4).
Synonyms:	BSCL3; CGL3; LCCNS; MSTP085; PPH3; VIP21
Note:	Is unsuitable for Flow Cyt or IP.

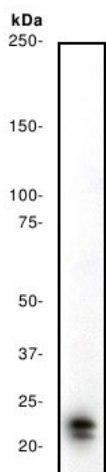


[View online »](#)

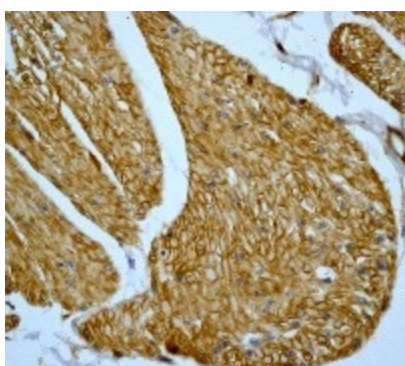
**Protein Families:** Druggable Genome, Transmembrane

**Protein Pathways:** Focal adhesion, Viral myocarditis

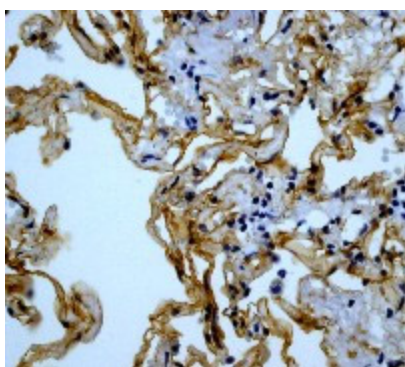
**Product images:**



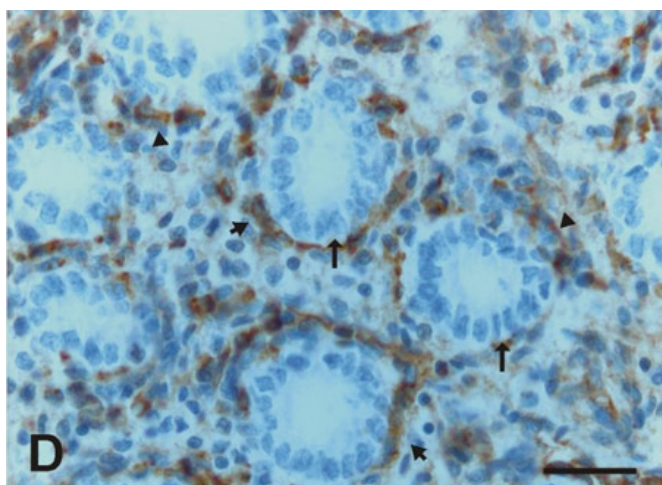
Western blot - Caveolin 1 antibody [E249]; Anti-Caveolin 1 antibody [E249] + A431 cell lysate. Predicted band size : 20 kDa. Observed band size : 23 kDa. Additional bands at : 22 kDa. We are unsure as to the identity of these extra bands.



Immunohistochemistry (Paraffin-embedded sections) - Anti-Caveolin 1 antibody [E249]; Immunohistochemical analysis of formalin-fixed, paraffin-embedded Human urinary bladder tissue, staining Caveolin 1 with TA300391 at 1/250 dilution.



Immunohistochemistry (Paraffin-embedded sections) - Anti-Caveolin 1 antibody [E249]; Immunohistochemical analysis of formalin-fixed, paraffin-embedded Human lung tissue, staining Caveolin 1 with TA300391 at 1/250ug/ml.



Immunohistochemistry (Formalin/PFA-fixed paraffin-embedded sections) - Anti-Caveolin 1 antibody [E249]; Immunohistochemical analysis of developing Human lung tissue, staining Caveolin 1 with TA300391 at 1/250 dilution.