

Product datasheet for **TA300380**

STAT3 Rabbit Monoclonal Antibody [Clone ID: E121-21]

Product data:

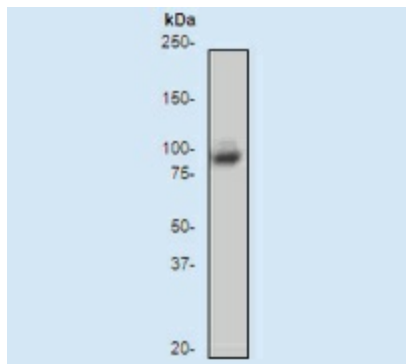
Product Type:	Primary Antibodies
Clone Name:	E121-21
Applications:	IHC, WB
Recommended Dilution:	IHC-Fr: Use at an assay dependent concentration; WB: 1:1000; IHC-P: Use at an assay dependent dilution; IP: 1:20
Reactivity:	Human (Does not react with: Mouse, Rat)
Host:	Rabbit
Isotype:	IgG
Clonality:	Monoclonal
Immunogen:	A synthetic peptide corresponding to residues surrounding Ser727 of human Stat3 was used as immunogen. The antibody only detects Stat3 without phosphorylation on Serine 727. It does not detect S727-phosphorylated Stat3. Predicted to cross-react with bovine, and horse, based on sequence homology.
Formulation:	PBS 49%,Sodium azide 0.01%,Glycerol 50%,BSA 0.05%
Purification:	Protein A purified
Conjugation:	Unconjugated
Storage:	Store at -20°C as received.
Stability:	Stable for 12 months from date of receipt.
Predicted Protein Size:	88 kDa
Gene Name:	signal transducer and activator of transcription 3
Database Link:	NP_998827 Entrez Gene 20848 Mouse Entrez Gene 25125 Rat Entrez Gene 6774 Human P40763



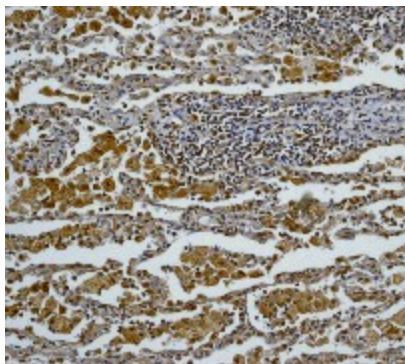
[View online »](#)

Background:	Stat3 is a member of a group of proteins (Signal Transduction and Activators of Transcription) that act as both signal transducers for cytokines and growth factors, as well as transcription factors (1,2). Stats are activated by tyrosine phosphorylation in response to different ligands, after which they translocate to the cell nucleus (1). Stat3 is constitutively activated in a number of human tumors (3). Stat3-activated transcription seems to be regulated by serine phosphorylation at Ser727 (4).
Synonyms:	ADMIO; APRF; HIES
Note:	Is unsuitable for Flow Cyt.
Protein Families:	Druggable Genome, Transcription Factors
Protein Pathways:	Acute myeloid leukemia, Adipocytokine signaling pathway, Chemokine signaling pathway, Jak-STAT signaling pathway, Pancreatic cancer, Pathways in cancer

Product images:



Western blot - STAT3 antibody [E121-21]; Anti-STAT3 antibody [E121-21] at 1/1000 dilution + A431 cell lysate. Predicted band size : 88 kDa. Observed band size : 92 kDa.



Immunohistochemistry (Paraffin-embedded sections) - STAT3 antibody [E121-21]; Immunohistochemical analysis of paraffin-embedded lung squamous carcinoma using TA300380 at a 1/50 dilution.