

## Product datasheet for **TA300199**

### LEO1 Rabbit Polyclonal Antibody

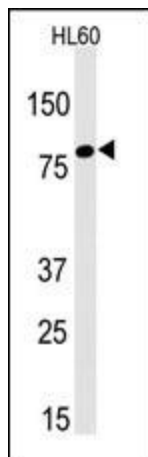
#### Product data:

Product Type:	Primary Antibodies
Applications:	WB
Recommended Dilution:	WB: 1:1000
Reactivity:	Human
Host:	Rabbit
Isotype:	IgG
Clonality:	Polyclonal
Immunogen:	This LEO1 antibody is generated from rabbits immunized with a KLH conjugated synthetic peptide between 130-159 amino acids from the N-terminal region of human LEO1.
Formulation:	Purified polyclonal antibody supplied in PBS with 0.09% (W/V) sodium azide.
Concentration:	lot specific
Purification:	This antibody is purified through a protein A column, followed by peptide affinity purification.
Conjugation:	Unconjugated
Storage:	Store at -20°C as received.
Stability:	Stable for 12 months from date of receipt.
Gene Name:	LEO1 homolog, Paf1/RNA polymerase II complex component
Database Link:	<a href="#">NP_620147</a> <a href="#">Entrez Gene 123169 Human</a> <a href="#">Q8WVCO</a>
Background:	The PAF1 complex is a multifunctional complex. The PAF1 complex interacts with POLR2A. It may be involved in both initiation and elongation, histone methylation and RNA processing. Overexpression of LEO1 induces cell growth arrest and premature senescence of fibroblasts.
Synonyms:	RDL

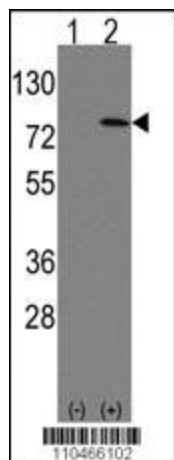


[View online »](#)

## Product images:



Western blot analysis of anti-Leo1 Antibody (N-term) (Cat. #TA300199) in HL60 cell line lysates (35ug/lane). Leo1 (arrow) was detected using the purified Pab.



Western blot analysis of Leo1 (arrow) using rabbit polyclonal Leo1 Antibody (Human N-term) (Cat.#TA300199). 293 cell lysates (2 ug/lane) either nontransfected (Lane 1) or transiently transfected with the Leo1 gene (Lane 2) (Origene Technologies).