

Product datasheet for **TA300177S**

SQSTM1 Rabbit Polyclonal Antibody

Product data:

Product Type:	Primary Antibodies
Applications:	IF, IHC, WB
Recommended Dilution:	IF: 1:50~100, WB: 1:1000, IHC: 1:50~100
Reactivity:	Human (Predicted: Mouse, Rat)
Host:	Rabbit
Isotype:	IgG
Clonality:	Polyclonal
Immunogen:	This SQSTM1 (p62) antibody is generated from rabbits immunized with a KLH conjugated synthetic peptide between 317-346 amino acids from the C-terminal region of human SQSTM1 (p62).
Formulation:	Purified polyclonal antibody supplied in PBS with 0.09% (W/V) sodium azide.
Concentration:	lot specific
Purification:	This antibody is prepared by Saturated Ammonium Sulfate (SAS) precipitation followed by dialysis against PBS.
Conjugation:	Unconjugated
Storage:	Store at -20°C as received.
Stability:	Stable for 12 months from date of receipt.
Gene Name:	sequestosome 1
Database Link:	NP_003891 Entrez Gene 18412 Mouse Entrez Gene 113894 Rat Entrez Gene 8878 Human Q13501



[View online »](#)

Background:

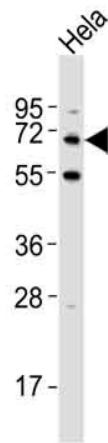
SQSTM1/p62 is an adapter protein which binds ubiquitin and may regulate the activation of NFkB1 by TNF-alpha, nerve growth factor (NGF) and interleukin-1. This protein may play a role in titin/TTN downstream signaling in muscle cells, and may also regulate signaling cascades through ubiquitination. This protein is involved in cell differentiation, apoptosis, immune response and regulation of K(+) channels. SQSTM1/p62 also appears to play a role in macroautophagic removal of intracellular protein aggregates. Cellular depletion studies of SQSTM1/p62 have indicated a role for association with LC3 and aggregate proteins in order to facilitate normal formation of the autophagosome.

Synonyms:

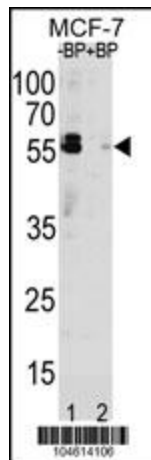
A170; OSIL; p60; p62; p62B; PDB3; ZIP3

Protein Families:

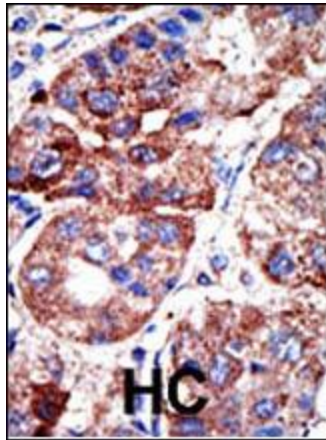
Druggable Genome, Transcription Factors

Product images:


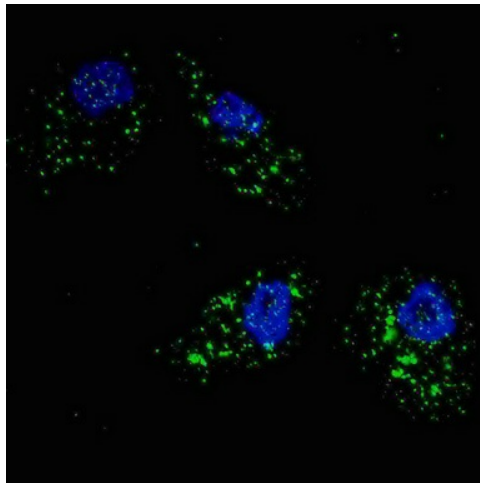
Western blot analysis of SQSTM1 Antibody (C331) Pab (Cat.#[TA300177]) pre-incubated without (lane 1) and with (lane 2) blocking peptide in MCF-7 cell line lysate. SQSTM1 Antibody (C331) (arrow) was detected using the purified Pab.



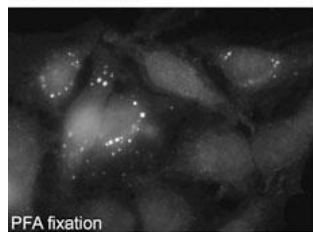
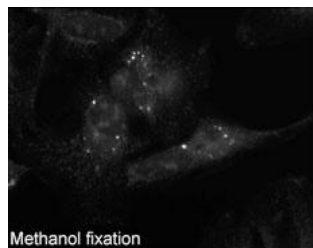
Western blot analysis of SQSTM1 (arrow) using rabbit polyclonal Autophagy SQSTM1 (p62) Antibody (C-term) (Cat.#[TA300177]). 293 cell lysates (2 ug/lane) either nontransfected (Lane 1) or transiently transfected with the SQSTM1 gene (Lane 2) (Origene Technologies).



Formalin-fixed and paraffin-embedded human cancer tissue reacted with the primary antibody, which was peroxidase-conjugated to the secondary antibody, followed by DAB staining. This data demonstrates the use of this antibody for immunohistochemistry; clinical relevance has not been evaluated. BC = breast carcinoma; HC = hepatocarcinoma.



Immunofluorescence staining of Autophagy SQSTM1 (p62) Antibody (C-term) (Cat# [TA300177]) on Methanol-fixed and PFA fixed HeLa cells. Data courtesy of Dr. Eeva-Liisa Eskelinen, University of Helsinki, Finland.



IF image of U251 cells stained with SQSTM1 (p62) (C-term) antibody. U251 cells were treated with Chloroquine, then incubated with [TA300177] SQSTM1 (p62) (C-term) primary antibody (1:200, 2 h at RT). For secondary antibody, Alexa Fluor® 488 conjugated donkey anti-rabbit antibody (green) was used (1:1000, 1h). Nuclei were counterstained with Hoechst 33342 (blue). SQSTM1 (p62) immunoreactivity is localized to autophagic vacuoles in the cytoplasm of U251 cells.