

Product datasheet for **TA300151S**

REA Rabbit Polyclonal Antibody

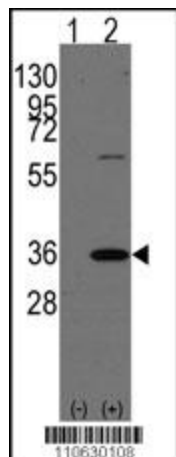
Product data:

| | |
|-----------------------|-------------------------------------------------------------------------------------------------------------------------------------------------------------------------------------------------------------------------------------------------------------------------------------------------------------------------------------------------------------------------------------------------------------------------------------------------------------------------|
| Product Type: | Primary Antibodies |
| Applications: | IHC, WB |
| Recommended Dilution: | WB: 1:1000, IHC: 1:10~50 |
| Reactivity: | Human (Predicted: Mouse, Rat, Bovine, Chicken) |
| Host: | Rabbit |
| Isotype: | IgG |
| Clonality: | Polyclonal |
| Immunogen: | This REA (PHB2) antibody is generated from rabbits immunized with a KLH conjugated synthetic peptide between 66-95 amino acids from the N-terminal region of human REA (PHB2). |
| Formulation: | Purified polyclonal antibody supplied in PBS with 0.09% (W/V) sodium azide. |
| Concentration: | lot specific |
| Purification: | This antibody is purified through a protein G column, followed by dialysis against PBS. |
| Conjugation: | Unconjugated |
| Storage: | Store at -20°C as received. |
| Stability: | Stable for 12 months from date of receipt. |
| Database Link: | NP_009204 Entrez Gene 12034 Mouse Entrez Gene 114766 Rat |
| Background: | PHB2 acts as a mediator of transcriptional repression by nuclear hormone receptors via recruitment of histone deacetylases. This protein functions as an estrogen receptor (ER)-selective coregulator that potentiates the inhibitory activities of antiestrogens and represses the activity of estrogens. It competes with NCOA1 for modulation of ER transcriptional activity. It is probably involved in regulating mitochondrial respiration activity and in aging. |
| Synonyms: | BAP; Bap37; BCAP37; p22; PNAS-141; REA |
| Protein Families: | Druggable Genome, Transcription Factors |

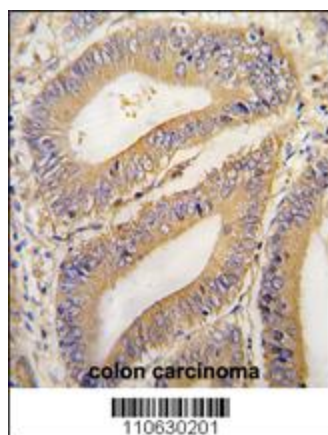


[View online »](#)

Product images:



Western blot analysis of PHB2 (arrow) using rabbit polyclonal PHB2 Antibody (Human C-term) (Cat.#[TA300151]).



Formalin-fixed and paraffin-embedded human colon carcinoma tissue reacted with PHB2 Antibody (N-term) (Cat.#[TA300151]), which was peroxidase-conjugated to the secondary antibody, followed by DAB staining. This data demonstrates the use of this antibody for immunohistochemistry; clinical relevance has not been evaluated.