

## Product datasheet for **TA300124**

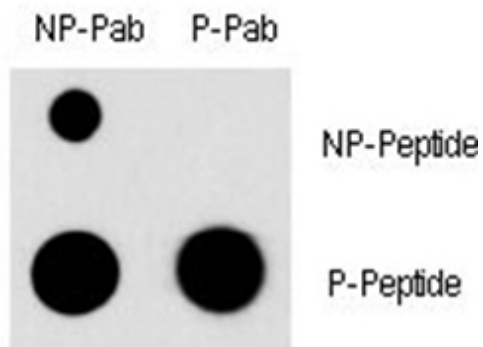
### MEF2C Rabbit Polyclonal Antibody

#### Product data:

Product Type:	Primary Antibodies
Applications:	Dot
Recommended Dilution:	DB: 1:500
Reactivity:	Human (Predicted: Pig)
Modifications:	Phospho-specific
Host:	Rabbit
Isotype:	IgG
Clonality:	Polyclonal
Immunogen:	This MEF2C Antibody is generated from rabbits immunized with a KLH conjugated synthetic phosphopeptide corresponding to amino acid residues surrounding S396 of human MEF2C.
Formulation:	Purified polyclonal antibody supplied in PBS with 0.09% (W/V) sodium azide.
Concentration:	lot specific
Purification:	This antibody is purified through a protein A column, followed by peptide affinity purification.
Conjugation:	Unconjugated
Storage:	Store at -20°C as received.
Stability:	Stable for 12 months from date of receipt.
Gene Name:	myocyte enhancer factor 2C
Database Link:	<a href="#">NP_002388</a> <a href="#">Entrez Gene 4208 Human</a> <a href="#">Q06413</a>
Background:	MEF2C is a transcription activator which binds specifically to the MEF2 element present in the regulatory regions of many muscle-specific genes. This protein controls cardiac morphogenesis and myogenesis, and is also involved in vascular development. It may also be involved in neurogenesis and in the development of cortical architecture.
Synonyms:	C5DELq14.3; DEL5q14.3
Protein Families:	Transcription Factors
Protein Pathways:	MAPK signaling pathway



[View online »](#)

**Product images:**

Dot blot analysis of Phospho-MEF2C-S396 Antibody (Cat. #TA300124) and MEF2C Non Phospho-specific Pab on nitrocellulose membrane. 50ng of Phospho-peptide or Non Phospho-peptide per dot were adsorbed. Antibody working concentrations are 0.5ug per ml.

**Dot Blot**