

## Product datasheet for **TA300103S**

### HS2ST1 Rabbit Polyclonal Antibody

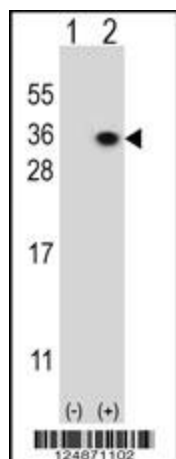
#### Product data:

Product Type:	Primary Antibodies
Applications:	WB
Recommended Dilution:	WB: 1:1000
Reactivity:	Human
Host:	Rabbit
Isotype:	IgG
Clonality:	Polyclonal
Immunogen:	This HS2ST1 antibody is generated from rabbits immunized with a KLH conjugated synthetic peptide between 16-45 amino acids from the N-terminal region of human HS2ST1.
Formulation:	Purified polyclonal antibody supplied in PBS with 0.09% (W/V) sodium azide.
Purification:	This antibody is purified through a protein A column, followed by peptide affinity purification.
Conjugation:	Unconjugated
Storage:	Store at -20°C as received.
Stability:	Stable for 12 months from date of receipt.
Gene Name:	heparan sulfate 2-O-sulfotransferase 1
Database Link:	<a href="#">NP_036394</a> <a href="#">Entrez Gene 9653 Human</a> <a href="#">Q7LGA3</a>
Background:	Heparan sulfate biosynthetic enzymes are key components in generating a myriad of distinct heparan sulfate fine structures that carry out multiple biologic activities. Heparan sulfate 2-O-sulfotransferase is a member of the heparan sulfate biosynthetic enzyme family. This family member transfers sulfate to the 2 position of the iduronic acid residue of heparan sulfate. The disruption of the HS2ST1 gene resulted in no kidney formation in knockout embryonic mice, indicating that the absence of this enzyme may interfere with the signaling required for kidney formation.
Synonyms:	dJ604K5.2
Protein Pathways:	Heparan sulfate biosynthesis

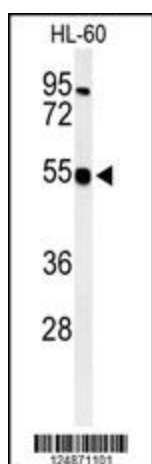


[View online »](#)

## Product images:



Western blot analysis of HS2ST1 (arrow) using rabbit polyclonal HS2ST1 Antibody (N-term) (Cat# [TA300103]). 293 cell lysates (2 ug/lane) either nontransfected (Lane 1) or transiently transfected with the HS2ST1 gene (Lane 2) (Origene Technologies).



Western blot analysis of HS2ST1 Antibody (N-term) (Cat# [TA300103]) in HL-60 cell line lysates (35ug/lane). HS2ST1 (arrow) was detected using the purified Pab.