

Product datasheet for **TA300086**

EOMES Rabbit Polyclonal Antibody

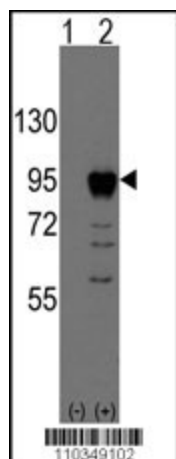
Product data:

Product Type:	Primary Antibodies
Applications:	WB
Recommended Dilution:	WB: 1:1000
Reactivity:	Human
Host:	Rabbit
Isotype:	IgG
Clonality:	Polyclonal
Immunogen:	This EOMES (TBR2) antibody is generated from rabbits immunized with a KLH conjugated synthetic peptide between 26-57 amino acids from the N-terminal region of human EOMES (TBR2).
Formulation:	Purified polyclonal antibody supplied in PBS with 0.09% (W/V) sodium azide.
Concentration:	lot specific
Purification:	This antibody is purified through a protein A column, followed by peptide affinity purification.
Conjugation:	Unconjugated
Storage:	Store at -20°C as received.
Stability:	Stable for 12 months from date of receipt.
Gene Name:	eomesodermin
Database Link:	NP_005433 Entrez Gene 8320 Human O95936
Background:	This protein is a member of a conserved protein family that shares a common DNA-binding domain, the T-box. T-box genes encode transcription factors involved in the regulation of developmental processes. A similar protein disrupted in mice is shown to be essential during trophoblast development and gastrulation.
Synonyms:	TBR2
Protein Families:	Embryonic stem cells, ES Cell Differentiation/IPS, Transcription Factors



[View online »](#)

Product images:



Western blot analysis of EOMES (arrow) using rabbit polyclonal EOMES Antibody (Human N-term) (RB10349).