

Product datasheet for **TA300078S**

Dysbindin (DTNBP1) Rabbit Polyclonal Antibody

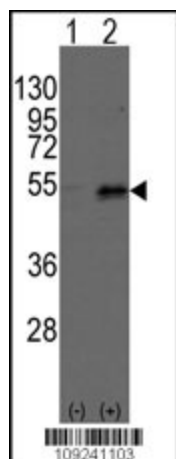
Product data:

Product Type:	Primary Antibodies
Applications:	IHC, WB
Recommended Dilution:	WB: 1:1000, IHC: 1:10~50
Reactivity:	Human, Mouse
Host:	Rabbit
Isotype:	IgG
Clonality:	Polyclonal
Immunogen:	This Dtnbp1 antibody is generated from rabbits immunized with a KLH conjugated synthetic peptide between 296-325 amino acids from the C-terminal region of human Dtnbp1.
Formulation:	Purified polyclonal antibody supplied in PBS with 0.09% (W/V) sodium azide.
Concentration:	lot specific
Purification:	This antibody is purified through a protein A column, followed by peptide affinity purification.
Conjugation:	Unconjugated
Storage:	Store at -20°C as received.
Stability:	Stable for 12 months from date of receipt.
Gene Name:	dystrobrevin binding protein 1
Database Link:	NP_115498 Entrez Gene 94245 Mouse Entrez Gene 84062 Human Q96EV8
Background:	Dtnp1 may play a role in organelle biogenesis associated with melanosomes, platelet dense granules, and lysosomes. A similar protein in mouse is a component of a protein complex termed biogenesis of lysosome-related organelles complex 1 (BLOC-1), and binds to alpha- and beta-dystrobrevins, which are components of the dystrophin-associated protein complex (DPC). Mutations in this protein are associated with Hermansky-Pudlak syndrome type 7. This protein may also be associated with schizophrenia.
Synonyms:	BLOC1S8; DBND; HPS7; My031; SDY
Protein Families:	Druggable Genome

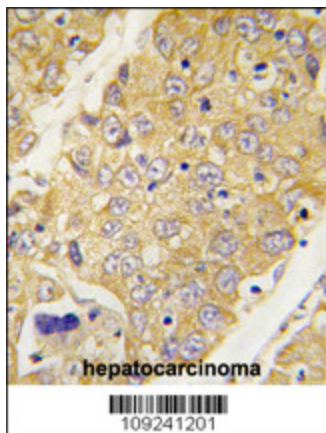


[View online »](#)

Product images:



Western blot analysis of Dtnbp1 (arrow) using rabbit polyclonal Dysbindin (Dtnbp1) Antibody (C-term) (Cat.#[TA300078]).



Formalin-fixed and paraffin-embedded human hepatocarcinoma tissue reacted with Dtnbp1 Antibody (C-term) (Cat.#[TA300078]), which was peroxidase-conjugated to the secondary antibody, followed by DAB staining. This data demonstrates the use of this antibody for immunohistochemistry; clinical relevance has not been evaluated.