

Product datasheet for **TA300061S**

APPBP1 (NAE1) Rabbit Polyclonal Antibody

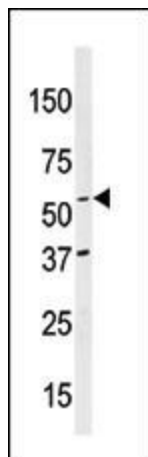
Product data:

Product Type:	Primary Antibodies
Applications:	IHC, WB
Recommended Dilution:	WB: 1:1000, IHC: 1:50~100
Reactivity:	Human (Predicted: Mouse, Rat, Monkey)
Host:	Rabbit
Isotype:	IgG
Clonality:	Polyclonal
Immunogen:	This NAE1 (APPBP1) antibody is generated from rabbits immunized with a KLH conjugated synthetic peptide between 430-459 amino acids from the C-terminal region of human NAE1 (APPBP1).
Formulation:	Purified polyclonal antibody supplied in PBS with 0.09% (W/V) sodium azide.
Concentration:	lot specific
Purification:	This antibody is purified through a protein G column, followed by dialysis against PBS.
Conjugation:	Unconjugated
Storage:	Store at -20°C as received.
Stability:	Stable for 12 months from date of receipt.
Gene Name:	NEDD8 activating enzyme E1 subunit 1
Database Link:	NP_001018169 Entrez Gene 84019 Rat Entrez Gene 234664 Mouse Entrez Gene 696429 Monkey Entrez Gene 8883 Human Q13564
Background:	APPBP1 binds to the beta-amyloid precursor protein, a cell surface protein with signal-transducing properties thought to play a role in the pathogenesis of Alzheimer's disease. In addition, this protein can form a heterodimer with UBE1C and bind and activate NEDD8, a ubiquitin-like protein. APPBP1 is required for cell cycle progression through the S/M checkpoint.
Synonyms:	A-116A10.1; APPBP1; HPP1; ula-1
Protein Pathways:	Alzheimer's disease

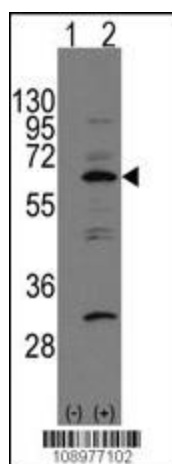


[View online »](#)

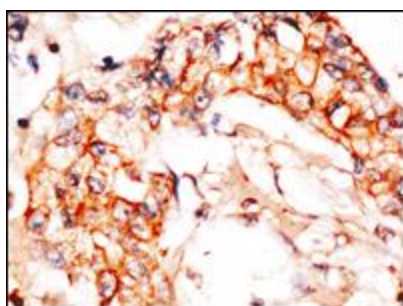
Product images:



Western blot analysis of anti-APPBP1 Antibody (C-term) (Cat.#[TA300061]) in mouse brain tissue lysates (35ug/lane). APPBP1 (arrow) was detected using the purified Pab.



Western blot analysis of APP-BP1 (arrow) using rabbit polyclonal APP-BP1 Antibody (C-term) (Cat.#[TA300061]). 293 cell lysates (2 ug/lane) either nontransfected (Lane 1) or transiently transfected with the APP-BP1 gene (Lane 2) (Origene Technologies).



Formalin-fixed and paraffin-embedded human breast carcinoma reacted with anti-APPBP1 Antibody (C-term), which was peroxidase-conjugated to the secondary antibody, followed by DAB staining. This data demonstrates the use of this antibody for immunohistochemistry; clinical relevance has not been evaluated.