

Product datasheet for **TA300060**

Amyloid Precursor Protein (APP) Rabbit Polyclonal Antibody

Product data:

Product Type:	Primary Antibodies
Applications:	WB
Recommended Dilution:	WB: 1:1000
Reactivity:	Human (Predicted: Mouse, Rat, Pig, Monkey)
Host:	Rabbit
Isotype:	IgG
Clonality:	Polyclonal
Immunogen:	This APP antibody is generated from rabbits immunized with a KLH conjugated synthetic peptide between 736-770 amino acids from the C-terminal region of human APP.
Formulation:	Purified polyclonal antibody supplied in PBS with 0.09% (W/V) sodium azide.
Concentration:	lot specific
Purification:	This antibody is prepared by Saturated Ammonium Sulfate (SAS) precipitation followed by dialysis against PBS.
Conjugation:	Unconjugated
Storage:	Store at -20°C as received.
Stability:	Stable for 12 months from date of receipt.
Gene Name:	amyloid beta precursor protein
Database Link:	NP_000475 Entrez Gene 11820 Mouse Entrez Gene 54226 Rat Entrez Gene 100427716 Monkey Entrez Gene 351 Human P05067
Background:	APP is a cell surface receptor and transmembrane precursor protein that is cleaved by secretases to form a number of peptides. Some of these peptides are secreted and can bind to the acetyltransferase complex APBB1/TIP60 to promote transcriptional activation, while others form the protein basis of the amyloid plaques found in the brains of patients with Alzheimer disease. Mutations in this gene have been implicated in autosomal dominant Alzheimer disease and cerebroarterial amyloidosis (cerebral amyloid angiopathy).
Synonyms:	AAA; ABETA; ABPP; AD1; APPI; CTFgamma; CVAP; PN-II; PN2

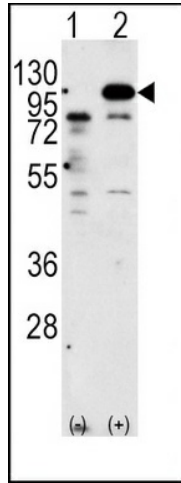


[View online »](#)

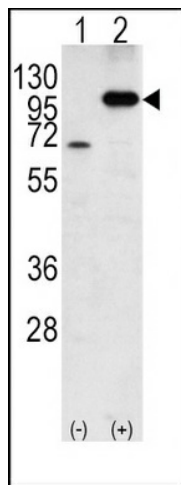
Protein Families: Druggable Genome, Transmembrane

Protein Pathways: Alzheimer's disease

Product images:



Western blot analysis of APP (arrow) using rabbit polyclonal APP Antibody (C-term) (Cat. #TA300060). 293 cell lysates (2 ug/lane) either nontransfected (Lane 1) or transiently transfected with the APP gene (Lane 2) (Origene Technologies).



Western blot analysis of APP (arrow) using rabbit polyclonal APP Antibody (C-term) (Cat. #TA300060). 293 cell lysates (2 ug/lane) either nontransfected (Lane 1) or transiently transfected with the APP gene (Lane 2) (Origene Technologies).