

## Product datasheet for **TA300051**

### PIM2 Rabbit Polyclonal Antibody

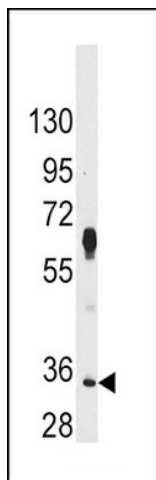
#### Product data:

Product Type:	Primary Antibodies
Applications:	IHC, IP, WB
Recommended Dilution:	WB: 1:1000, IP: 1:50~100, IHC: 1:50~100
Reactivity:	Human
Host:	Rabbit
Isotype:	Ig
Clonality:	Polyclonal
Immunogen:	This PIM2 antibody is generated from rabbits immunized with a KLH conjugated synthetic peptide between 277-308 amino acids from the C-terminal region of human PIM2.
Formulation:	Purified polyclonal antibody supplied in PBS with 0.09% (W/V) sodium azide.
Concentration:	lot specific
Purification:	This antibody is prepared by Saturated Ammonium Sulfate (SAS) precipitation followed by dialysis against PBS.
Conjugation:	Unconjugated
Storage:	Store at -20°C as received.
Stability:	Stable for 12 months from date of receipt.
Gene Name:	Pim-2 proto-oncogene, serine/threonine kinase
Database Link:	<a href="#">NP_006866</a> <a href="#">Entrez Gene 11040 Human</a> <a href="#">Q9P1W9</a>
Background:	Pim proteins (Pim-1, Pim-2 and Pim-3) are oncogene-encoded serine/threonine kinases. Pim-2 is highly homologous to Pim-1 with similar oncogenic functions. Pim-2 overexpression promotes resistance to a host of apoptotic stimuli; its expression is negatively regulated by growth factor depletion. Increased levels of Pim-2 has also been observed in certain cancers.
Synonyms:	Pim-2h
Protein Families:	Druggable Genome, Protein Kinase
Protein Pathways:	Acute myeloid leukemia

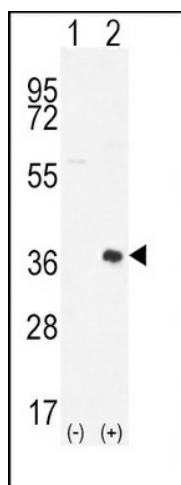


[View online »](#)

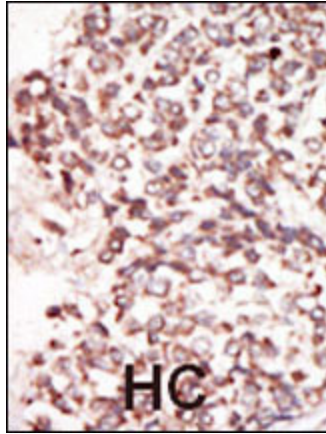
Product images:



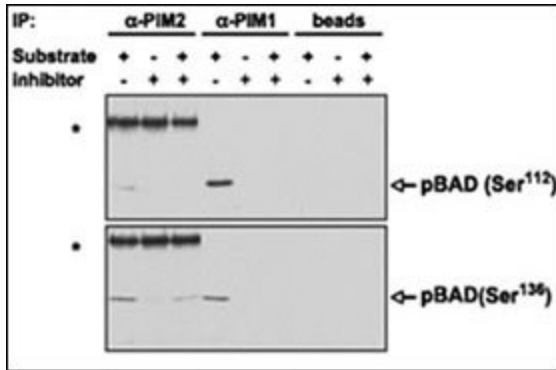
Western blot analysis of anti-PIM2 Antibody (C-term) (Cat.#TA300051) in HeLa cell line lysates (35ug/lane). PIM2 (arrow) was detected using the purified Pab.



Western blot analysis of PIM2 (arrow) using rabbit polyclonal PIM2 Antibody (D292) (Cat.#TA300051). 293 cell lysates (2 ug/lane) either nontransfected (Lane 1) or transiently transfected (Lane 2) with the PIM2 gene.



Formalin-fixed and paraffin-embedded human cancer tissue reacted with the primary antibody, which was peroxidase-conjugated to the secondary antibody, followed by DAB staining. This data demonstrates the use of this antibody for immunohistochemistry; clinical relevance has not been evaluated. BC = breast carcinoma; HC = hepatocarcinoma.



PIM proteins were immunoprecipitated from MV4;11 cells and the agarose-protein A-immunoprecipitate complex was tested for its ability to phosphorylate BAD in vitro in the presence or absence of K00135. Phosphorylation of BAD (both on Ser112 and Ser136) was abrogated on addition of the compound. Beads alone (without anti-PIM antibodies) as a negative control.