

Product datasheet for **TA300047S**

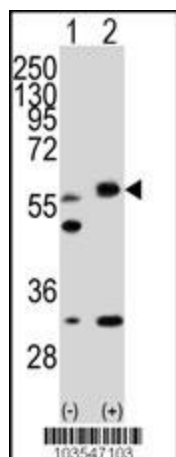
LKB1 (STK11) Rabbit Polyclonal Antibody

Product data:

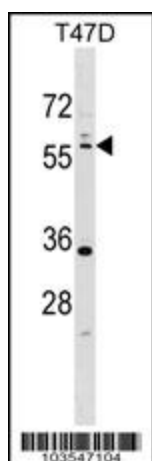
Product Type:	Primary Antibodies
Applications:	FC, IF, IHC, WB
Recommended Dilution:	IHC: 1:50~100, WB: 1:1000, FC: 1:10~50, IF: 1:10~50
Reactivity:	Human (Predicted: Mouse, Rat, Chicken, Xenopus)
Host:	Rabbit
Isotype:	Ig
Clonality:	Polyclonal
Immunogen:	This STK11 (LKB1) antibody is generated from rabbits immunized with a KLH conjugated synthetic peptide between 14-44 amino acids from the N-terminal region of human STK11 (LKB1).
Formulation:	Purified polyclonal antibody supplied in PBS with 0.09% (W/V) sodium azide.
Concentration:	lot specific
Purification:	This antibody is purified through a protein A column, followed by peptide affinity purification.
Conjugation:	Unconjugated
Storage:	Store at -20°C as received.
Stability:	Stable for 12 months from date of receipt.
Gene Name:	serine/threonine kinase 11
Database Link:	NP_000446 Entrez Gene 20869 Mouse Entrez Gene 314621 Rat Entrez Gene 6794 Human Q15831
Background:	STK11 encodes a member of the serine/threonine kinase family, regulates cell polarity and functions as a tumor suppressor. Mutations in this gene have been associated with Peutz-Jeghers syndrome, an autosomal dominant disorder characterized by the growth of polyps in the gastrointestinal tract, pigmented macules on the skin and mouth, and other neoplasms.
Synonyms:	hLKB1; LKB1; PJS
Protein Families:	Druggable Genome, Protein Kinase
Protein Pathways:	Adipocytokine signaling pathway, mTOR signaling pathway


[View online »](#)

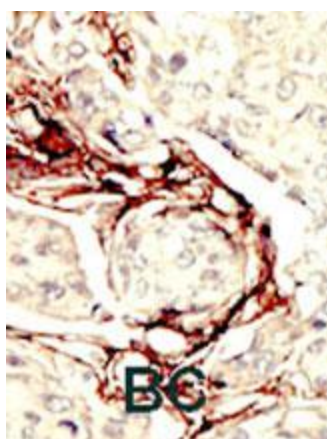
Product images:



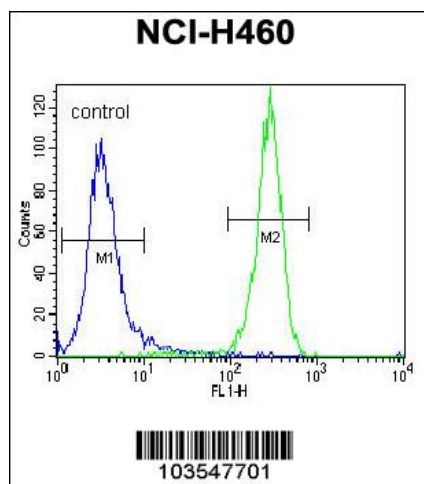
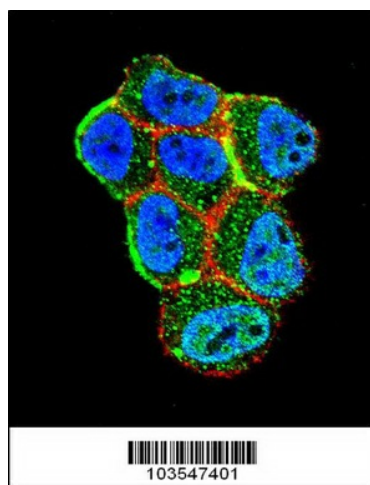
Western blot analysis of STK11 (arrow) using rabbit polyclonal STK11 Antibody



STK11 Antibody (I29) (Cat. #TA300047J) western blot analysis in T47D cell line lysates (35ug/lane). This demonstrates the STK11 antibody detected the STK11 protein (arrow).



Formalin-fixed and paraffin-embedded human cancer tissue reacted with the primary antibody, which was peroxidase-conjugated to the secondary antibody, followed by DAB staining. This data demonstrates the use of this antibody for immunohistochemistry; clinical relevance has not been evaluated. BC = breast carcinoma; HC = hepatocarcinoma.



Confocal immunofluorescent analysis of STK11 (LKB1) Antibody (N-term I29) (Cat#[TA300047]) with ZR-75-1 cell followed by Alexa Fluor 488-conjugated goat anti-rabbit IgG (green). Actin filaments have been labeled with Alexa Fluor 555 phalloidin (red). DAPI was used to stain the cell nuclear (blue).

STK11 (LKB1) Antibody (N-term I29) (Cat. # [TA300047]) flow cytometric analysis of NCI-H460 cells (right histogram) compared to a negative control cell (left histogram). FITC-conjugated goat-anti-rabbit secondary antibodies were used for the analysis.