

Product datasheet for **TA300039S**

PIM1 Rabbit Polyclonal Antibody

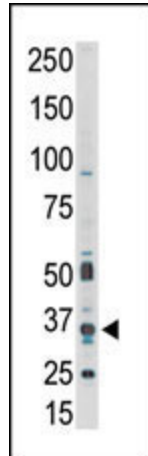
Product data:

Product Type:	Primary Antibodies
Applications:	IHC, WB
Recommended Dilution:	WB: 1:1000, IHC: 1:50~100
Reactivity:	Human (Predicted: Bovine)
Host:	Rabbit
Isotype:	Ig
Clonality:	Polyclonal
Immunogen:	This PIM1 antibody is generated from rabbits immunized with a KLH conjugated synthetic peptide between 374-404 amino acids from the C-terminal region of human PIM1.
Formulation:	Purified polyclonal antibody supplied in PBS with 0.09% (W/V) sodium azide.
Purification:	This antibody is prepared by Saturated Ammonium Sulfate (SAS) precipitation followed by dialysis against PBS.
Conjugation:	Unconjugated
Storage:	Store at -20°C as received.
Stability:	Stable for 12 months from date of receipt.
Gene Name:	Pim-1 proto-oncogene, serine/threonine kinase
Database Link:	NP_002639 Entrez Gene 5292 Human P11309
Background:	PIM1, which belongs to the Serine/Threonine protein kinase family, is thought to play a role in signal transduction in blood cells. The protooncogene PIM1 encodes a protein kinase upregulated in prostate cancer. It may affect the structure or silencing of chromatin by phosphorylating HP1 gamma/CBX3. PIM1 is expressed primarily in cells of the hematopoietic and germ line lineages.
Synonyms:	PIM
Protein Families:	Druggable Genome, ES Cell Differentiation/IPS, Protein Kinase
Protein Pathways:	Acute myeloid leukemia, Jak-STAT signaling pathway

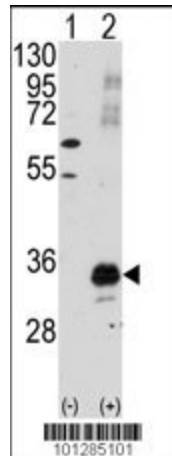


[View online »](#)

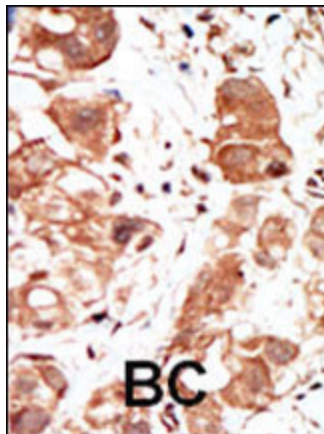
Product images:



Western blot analysis of anti-PIM1 Pab (Cat. # [TA300039]) in A549 cell lysate. PIM1 (arrow) was detected using purified Pab. Secondary HRP-anti-rabbit was used for signal visualization with chemiluminescence.



Western blot analysis of PIM1 (arrow) using PIM1 Antibody (C-term) (Cat.#[TA300039]). 293 cell lysates (2 ug/lane) either nontransfected (Lane 1) or transiently transfected with the PIM1 gene (Lane 2) (Origene Technologies).



Formalin-fixed and paraffin-embedded human cancer tissue reacted with the primary antibody, which was peroxidase-conjugated to the secondary antibody, followed by DAB staining. This data demonstrates the use of this antibody for immunohistochemistry; clinical relevance has not been evaluated. BC = breast carcinoma; HC = hepatocarcinoma.