

Product datasheet for **TA300027**

BubR1 (BUB1B) Rabbit Polyclonal Antibody

Product data:

Product Type:	Primary Antibodies
Applications:	IHC, WB
Recommended Dilution:	WB: 1:1000, IHC: 1:50~100
Reactivity:	Human
Host:	Rabbit
Isotype:	Ig
Clonality:	Polyclonal
Immunogen:	This BUBR1 (BUB1B) antibody is generated from rabbits immunized with a KLH conjugated synthetic peptide between 3-33 amino acids from the N-terminal region of human BUBR1 (BUB1B).
Formulation:	Purified polyclonal antibody supplied in PBS with 0.09% (W/V) sodium azide.
Concentration:	lot specific
Purification:	This antibody is prepared by Saturated Ammonium Sulfate (SAS) precipitation followed by dialysis against PBS.
Conjugation:	Unconjugated
Storage:	Store at -20°C as received.
Stability:	Stable for 12 months from date of receipt.
Gene Name:	BUB1 mitotic checkpoint serine/threonine kinase B
Database Link:	NP_001202 Entrez Gene 701 Human O60566

[View online »](#)

Background:

BUB1B, a member of the Ser/Thr protein kinase family, is a probable component of the mitotic checkpoint that delays anaphase until all chromosomes are properly attached to the mitotic spindle. It can interact with BUB3, CENP-F, CENP-E and mitotin, and can be localized to nuclear kinetochores. This protein is highly expressed in thymus and spleen. The CD1 domain directs kinetochore localization and binding to BUB3. The protein possesses a cyclin destruction box sequence, which targets protein for rapid degradation by ubiquitin-dependent proteolysis during the transition from mitosis to interphase. Defects in BUB1B are associated with tumor formation.

Synonyms:

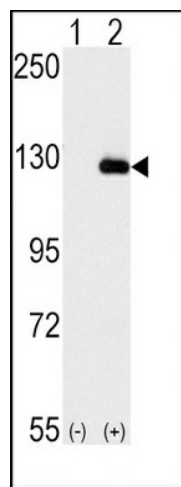
Bub1A; BUB1beta; BUBR1; hBUBR1; MAD3L; MVA1; SSK1

Protein Families:

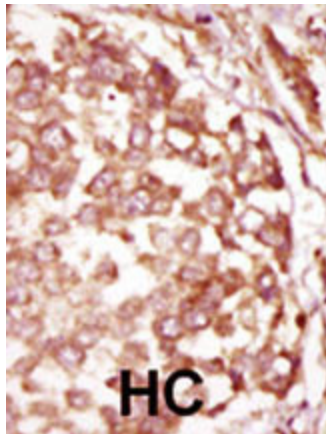
Druggable Genome, Protein Kinase, Stem cell - Pluripotency

Protein Pathways:

Cell cycle

Product images:


Western blot analysis of BUB1B (arrow) using rabbit polyclonal BUB1B Antibody (N-term) (Cat.#TA300027). 293 cell lysates (2 ug/lane) either nontransfected (Lane 1) or transiently transfected with the BUB1B gene (Lane 2) (Origene Technologies).



Formalin-fixed and paraffin-embedded human cancer tissue reacted with the primary antibody, which was peroxidase-conjugated to the secondary antibody, followed by DAB staining. This data demonstrates the use of this antibody for immunohistochemistry; clinical relevance has not been evaluated. BC = breast carcinoma; HC = hepatocarcinoma.