

Product datasheet for **TA300025S**

MCSF Receptor (CSF1R) Rabbit Polyclonal Antibody

Product data:

Product Type:	Primary Antibodies
Applications:	FC, IHC, WB
Recommended Dilution:	WB: 1:1000, FC: 1:10~50, IHC: 1:10~50
Reactivity:	Human
Host:	Rabbit
Isotype:	Ig
Clonality:	Polyclonal
Immunogen:	This MCSF Receptor (CSF1R) antibody is generated from rabbits immunized with a KLH conjugated synthetic peptide between 940-971 amino acids from the C-terminal region of human MCSF Receptor (CSF1R).
Formulation:	Purified polyclonal antibody supplied in PBS with 0.09% (W/V) sodium azide.
Purification:	This antibody is prepared by Saturated Ammonium Sulfate (SAS) precipitation followed by dialysis against PBS.
Conjugation:	Unconjugated
Storage:	Store at -20°C as received.
Stability:	Stable for 12 months from date of receipt.
Gene Name:	colony stimulating factor 1 receptor
Database Link:	NP_005202 Entrez Gene 1436 Human P07333
Background:	CSF1R is the receptor for colony stimulating factor 1, a cytokine which controls the production, differentiation, and function of macrophages. This receptor mediates most if not all of the biological effects of this cytokine. Ligand binding activates the receptor kinase through a process of oligomerization and transphosphorylation. The encoded protein is a tyrosine kinase transmembrane receptor and member of the CSF1/PDGF receptor family of tyrosine-protein kinases. Mutations in this gene have been associated with a predisposition to myeloid malignancy.
Synonyms:	C-FMS; CD115; CSF-1R; CSFR; FIM2; FMS; HDLS; M-CSF-R

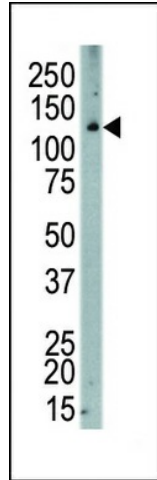


[View online »](#)

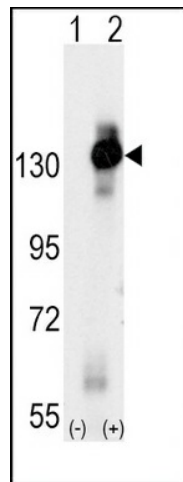
Protein Families: Druggable Genome, Protein Kinase, Transmembrane

Protein Pathways: Cytokine-cytokine receptor interaction, Endocytosis, Hematopoietic cell lineage, Pathways in cancer

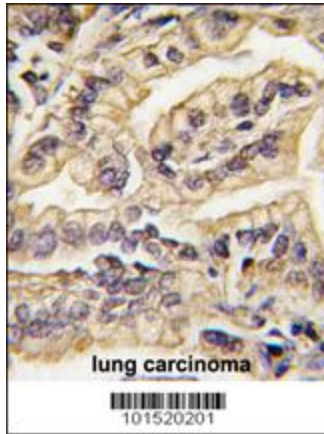
Product images:



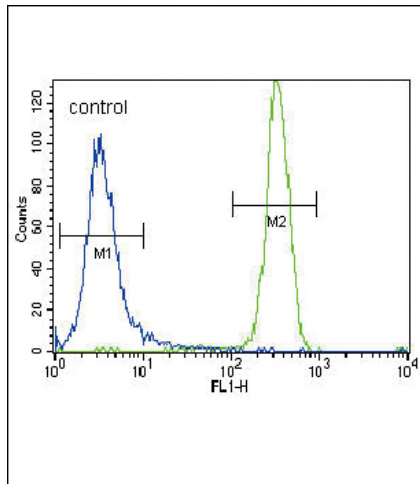
Western blot analysis of anti-CSF1R Pab (Cat. # [TA300025]) in human placenta. CSF1R (arrow) was detected using purified Pab. Secondary HRP-anti-rabbit was used for signal visualization with chemiluminescence.



Western blot analysis of CSF1R (arrow) using rabbit polyclonal CSF1R Antibody (C-term) (Cat.# [TA300025]). 293 cell lysates (2 ug/lane) either nontransfected (Lane 1) or transiently transfected with the CSF1R gene (Lane 2) (Origene Technologies).



Formalin-fixed and paraffin-embedded human lung carcinoma tissue reacted with CSF1R Antibody (C-term) (Cat.#[TA300025]), which was peroxidase-conjugated to the secondary antibody, followed by DAB staining. This data demonstrates the use of this antibody for immunohistochemistry; clinical relevance has not been evaluated.



MCSF Receptor (CSF1R) Antibody (C-term) (Cat. # [TA300025]) flow cytometric analysis of NCI-H460 cells (right histogram) compared to a negative control cell (left histogram). FITC-conjugated goat-anti-rabbit secondary antibodies were used for the analysis.