

Product datasheet for **TA190321**

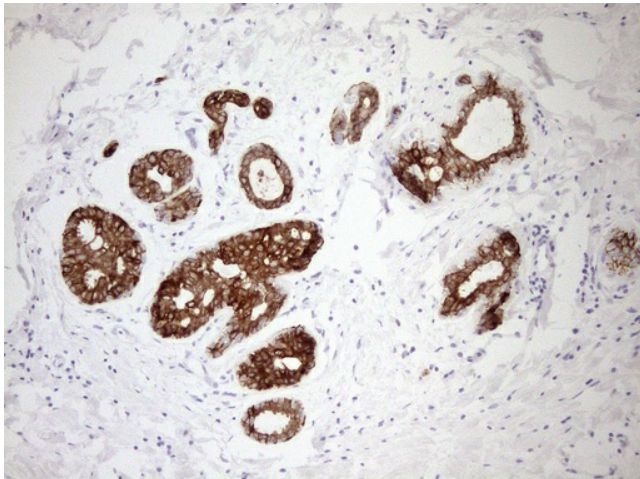
pan Cytokeratin Mouse Monoclonal Antibody [Clone ID: AE1+AE3]

Product data:

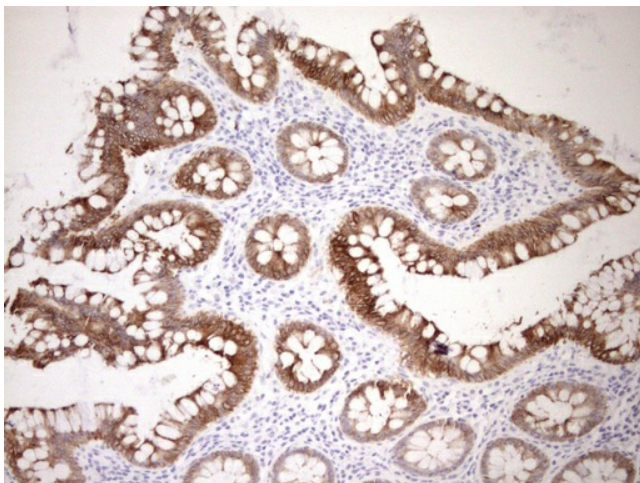
Product Type:	Primary Antibodies
Clone Name:	AE1+AE3
Applications:	IHC
Recommended Dilution:	IHC 1:1000-1:2500
Reactivity:	Human
Host:	Mouse
Isotype:	IgG1
Clonality:	Monoclonal
Immunogen:	Human epidermal cytokeratins
Formulation:	PBS (pH 7.3) containing 1% BSA, 50% glycerol and 0.02% sodium azide.
Concentration:	1 mg/ml
Purification:	Purified from mouse ascites fluids or tissue culture supernatant by affinity chromatography (protein A/G)
Conjugation:	Unconjugated
Storage:	Store at -20°C as received.
Stability:	Stable for 12 months from date of receipt.



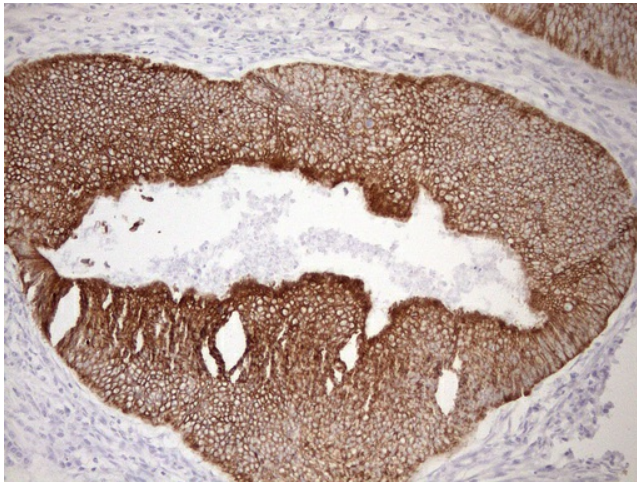
[View online »](#)

Product images:

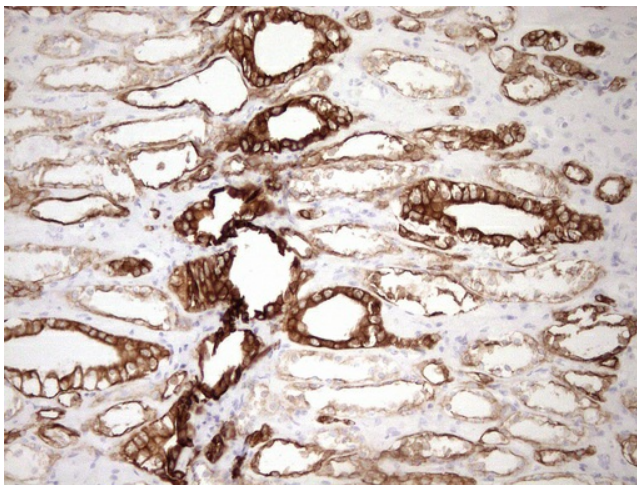
Immunohistochemical staining of paraffin-embedded Adenocarcinoma of Human breast tissue using anti-pan Cytokeratin mouse monoclonal antibody. (Heat-induced epitope retrieval by 1mM EDTA in 10mM Tris buffer (pH8.5) at 120°C for 3min, TA190321) (1:150)



Immunohistochemical staining of paraffin-embedded Human colon tissue within the normal limits using anti-pan Cytokeratin mouse monoclonal antibody. (Heat-induced epitope retrieval by 1mM EDTA in 10mM Tris buffer (pH8.5) at 120°C for 3min, TA190321) (1:15)



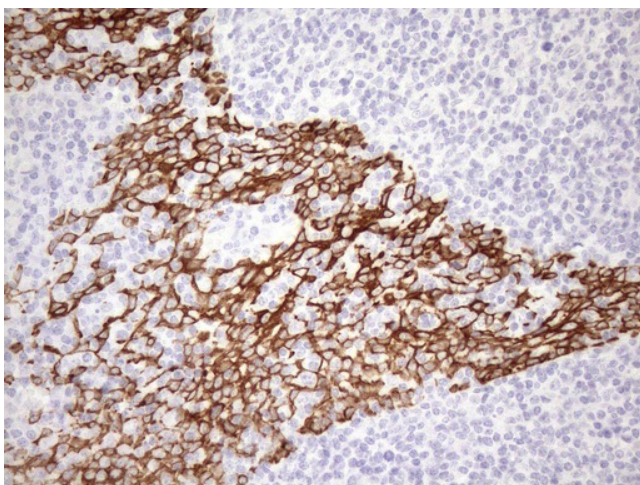
Immunohistochemical staining of paraffin-embedded Adenocarcinoma of Human colon tissue using anti-pan Cytokeratin mouse monoclonal antibody. (Heat-induced epitope retrieval by 1mM EDTA in 10mM Tris buffer (pH8.5) at 120°C for 3min, TA190321) (1:150)



Immunohistochemical staining of paraffin-embedded Human Kidney tissue within the normal limits using anti-pan Cytokeratin mouse monoclonal antibody. (Heat-induced epitope retrieval by 1mM EDTA in 10mM Tris buffer (pH8.5) at 120°C for 3min, TA190321) (1:1)



Immunohistochemical staining of paraffin-embedded Carcinoma of Human prostate tissue using anti-pan Cytokeratin mouse monoclonal antibody. (Heat-induced epitope retrieval by 1mM EDTA in 10mM Tris buffer (pH8.5) at 120°C for 3min, TA190321) (1:150)



Immunohistochemical staining of paraffin-embedded Human tonsil within the normal limits using anti-pan Cytokeratin mouse monoclonal antibody. (Heat-induced epitope retrieval by 1mM EDTA in 10mM Tris buffer (pH8.5) at 120°C for 3min, TA190321) (1:150)