

Product datasheet for **TA190202**

BrdU Mouse Monoclonal Antibody [Clone ID: OTI3B2]

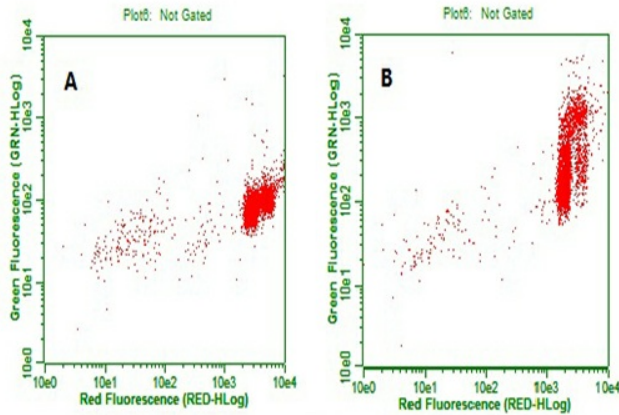
Product data:

Product Type:	Primary Antibodies
Clone Name:	OTI3B2
Applications:	FC
Recommended Dilution:	FLOW 1:100
Reactivity:	Human
Host:	Mouse
Isotype:	IgG1
Clonality:	Monoclonal
Immunogen:	Bromodeoxyuridine coupled to keyhole limpet hemocyanin (KLH).
Formulation:	PBS (pH 7.3) containing 1% BSA, 50% glycerol and 0.02% sodium azide.
Concentration:	1 mg/ml
Purification:	Purified from mouse ascites fluids or tissue culture supernatant by affinity chromatography (protein A/G)
Conjugation:	Unconjugated
Storage:	Store at -20°C as received.
Stability:	Stable for 12 months from date of receipt.

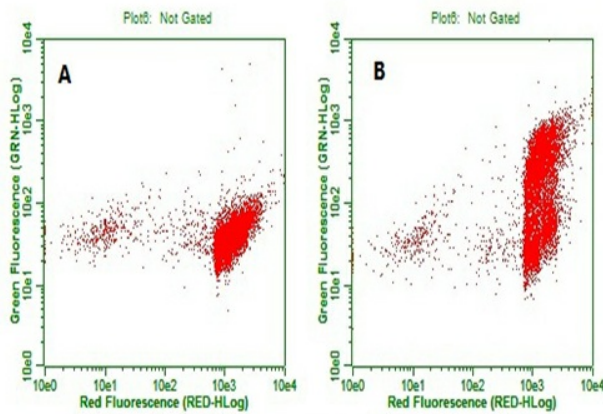


[View online »](#)

Product images:



Flow cytometric Analysis of HeLa cells, using anti-BrdU antibody (TA190202). HeLa cells were treated with vehicle (A, PBS) or incorporated with BrdU (B, 15 μ M, 30 minutes) (1:100).



Flow cytometric Analysis of Jurkat cells, using anti-BrdU antibody (TA190202). Jurkat were cells treated with vehicle (A, PBS) or incorporated with BrdU (B, 15 μ M, 30 minutes) (1:100).