

Product datasheet for **TA190113**

IDH1 Mutant (R132H) Rat Monoclonal Antibody [Clone ID: OTI3E12]

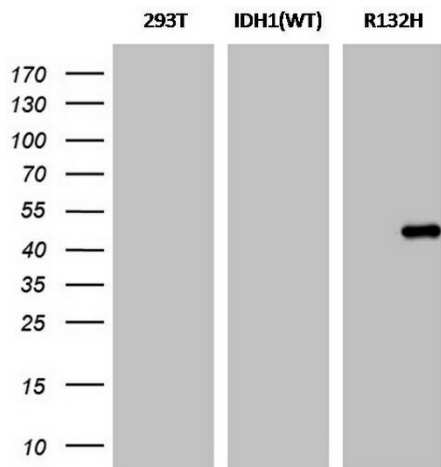
Product data:

Product Type:	Primary Antibodies
Clone Name:	OTI3E12
Applications:	WB
Recommended Dilution:	WB 1:500
Reactivity:	Human
Host:	Rat
Clonality:	Monoclonal
Immunogen:	Synthetic peptide around the R132H mutation region of the human IDH conjugated to KLH
Formulation:	PBS (pH 7.3) containing 1% BSA, 50% glycerol and 0.02% sodium azide.
Concentration:	1 mg/ml
Purification:	Purified from mouse ascites fluids or tissue culture supernatant by affinity chromatography (protein A/G)
Conjugation:	Unconjugated
Storage:	Store at -20°C as received.
Stability:	Stable for 12 months from date of receipt.



[View online »](#)

Product images:



HEK293T cells were transfected with the pCMV6-ENTRY control (Left lane "293T") or pCMV6-ENTRY IDH1 (wild type [RC210582], middle lane,) or pCMV6-ENTRY IDH1 mutated (R132H mutation [RC400096], right lane) cDNA for 48 hrs and lysed. Equivalent amounts of cell lysates (10 ug per lane) were separated by SDS-PAGE and immunoblotted with TA190113 (1:500) and then goat anti-rat IgG-HRP (1:2000).